

COLLEZIONE N°6

**BISAZZA**

CEMENTILES

**BISAZZA**  
CEMENTILES



La collezione CEMENTILES è una reinterpretazione in chiave contemporanea delle tradizionali piastrelle in cemento. La produzione mantiene integre le caratteristiche di artigianalità delle originali fasi di produzione, mentre il design è affidato ad alcuni dei più innovativi designer internazionali: Paola Navone, Jaime Hayon, India Mahdavi, Tom Dixon, David Rockwell, Carlo Dal Bianco, Fernando e Humberto Campana.

Le piastrelle in cemento si ottengono dalla sovrapposizione di due impasti, che vengono versati a mano in apposite forme e successivamente pressati. Il primo impasto, costituito da cemento bianco ad alta resistenza, polvere di marmo e ossidi colorati, determina disegno e colore della cementina; il secondo, di cemento e sabbia, diventa lo strato inferiore della piastrella. Una volta essiccate, le cementine sono quindi sottoposte ad un trattamento manuale con impregnante idrorepellente.

Quadrate (20x20 cm) o esagonali (20x23 cm), spessore 14 mm, disponibili in 29 colori e in un'ampia gamma di decori policromi, sono adatte al rivestimento di pavimenti e pareti di ambienti interni residenziali e commerciali a medio traffico.

*Bisazza puts a contemporary spin on the traditional cement tiles with its new CEMENTILES collection.*

*The handcrafted features of the original production process are maintained intact, while the design was entrusted to some of the most innovative international designers: Paola Navone, Jaime Hayon, India Mahdavi, Tom Dixon, David Rockwell, Carlo Dal Bianco, Fernando and Humberto Campana.*

*The cement tiles are made by layering two mixtures that are hand-poured into special moulds and then pressed. The first mixture, made up of highly durable white cement, marble dust and coloured oxides, determines the design and colour of the tile; the second, made of cement and sand, forms the bottom layer of the tile.*

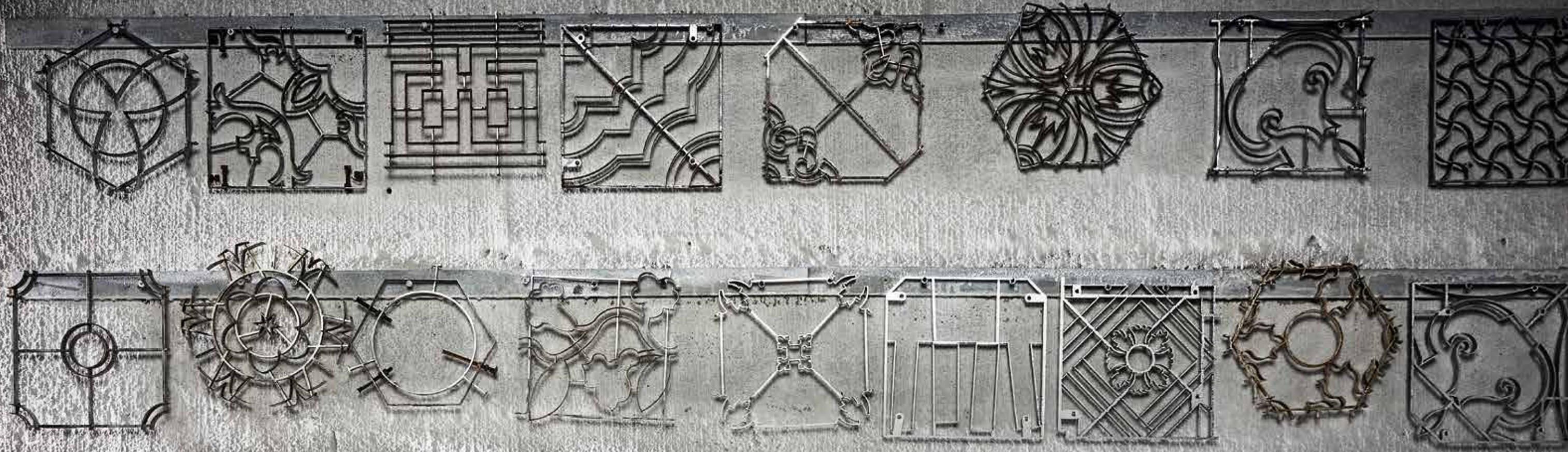
*Once they have dried, an impregnating water-repellent sealant is applied by hand to the tiles.*

*Available in both square (20x20 cm) and hexagonal (20x23 cm) shapes, the tiles are 14 mm thick, come in 29 colours and in a vast array of multi-coloured designs. They are suitable for use as floor and wall coverings for residential or commercial interiors with medium foot traffic.*







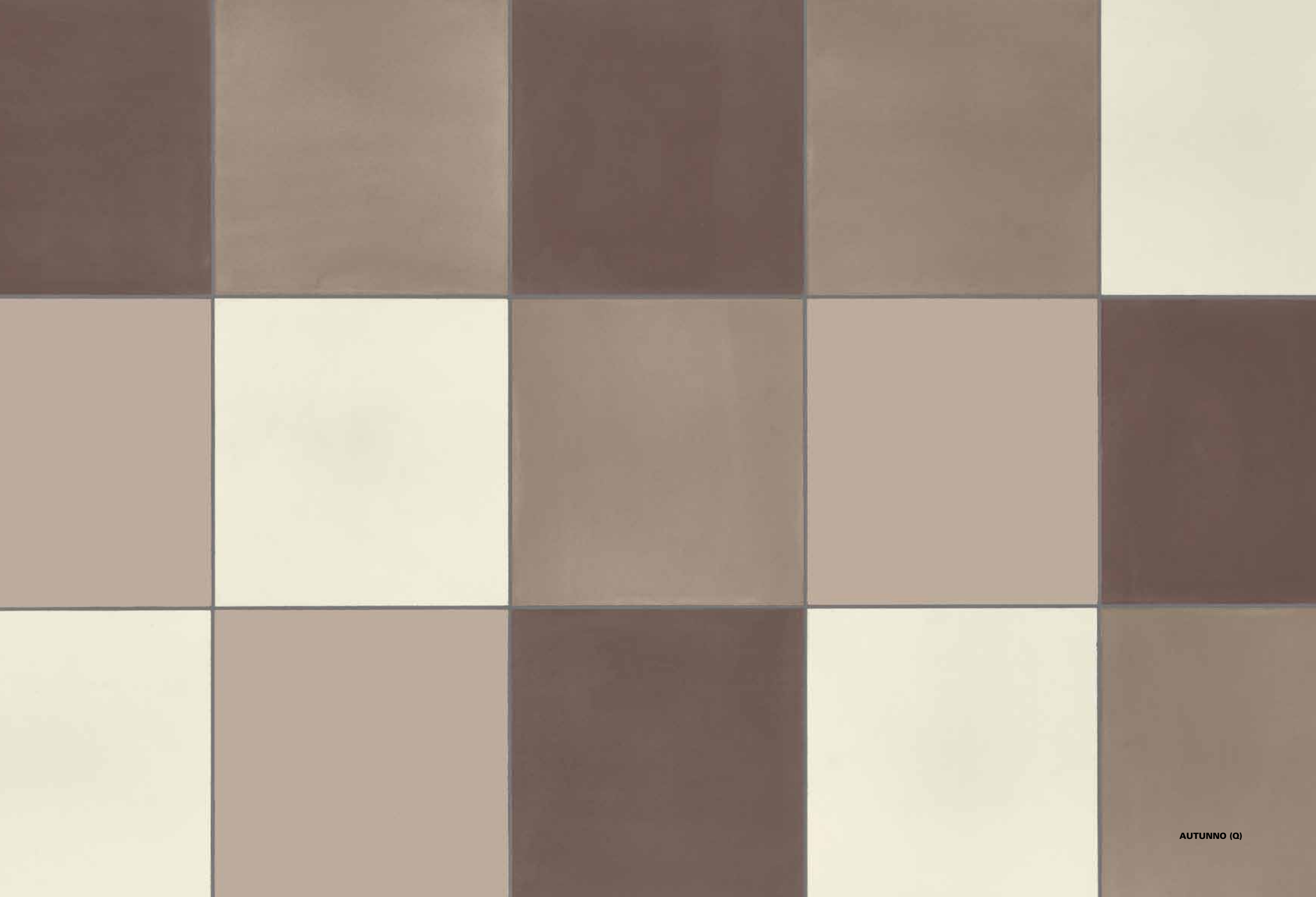


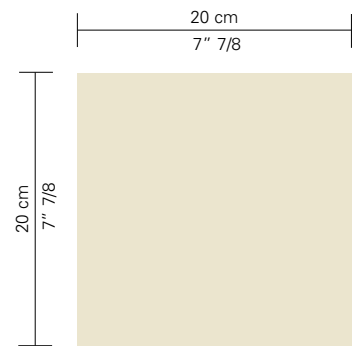
15	COLORI
25	Collezione NAVONE
43	Collezione MAHDAVI
59	Collezione DIXON
67	Collezione CAMPANA
73	Collezione DAL BIANCO
117	Collezione ROCKWELL
125	Collezione HAYON
135	Collezione BDS
147	BORDERS & BLENDS
157	Area tecnica/ <i>Technical Data</i>
163	Indice alfabetico/ <i>Contents</i>

La riproduzione fotografica dei colori, anche se molto vicina alla realtà, deve considerarsi a carattere puramente indicativo.  
The photo reproduction of the colours, although very close to reality, should be considered purely indicative.  
La reproduction photographique des couleurs, même si très proche de la réalité, n'est que purement indicative.  
Obwohl die Farben der Fotos realitätsnah sind, können sie zum Teil leicht vom Original abweichen.  
La reproducción fotográfica de los colores, aunque se acerque mucho a lo que son en la realidad, tiene que ser considerada solamente a título indicativo.



COLORI





**LATTE (Q)**

**GRANO (Q)**

**ZAFFERANO (Q)**

**FANGO (Q)**

**CILESTRINO (Q)**

**TURCHINO (Q)**

**ATLANTICO (Q)**

**CORDA (Q)**

**ÉCRU (Q)**

**TABACCO (Q)**

**CIOCCOLATO (Q)**

**MARE (Q)**

**PRUSSIA (Q)**

**TAN (Q)**

**LOTO (Q)**

**FRESIA (Q)**

**ARGENTO (Q)**

**LICHENE (Q)**

**CARAIBI (Q)**

**PETROLIO (Q)**

**RUGGINE (Q)**

**DIASPRO (Q)**

**PORFIDO (Q)**

**PISTACCHIO (Q)**

**MUSCHIO (Q)**

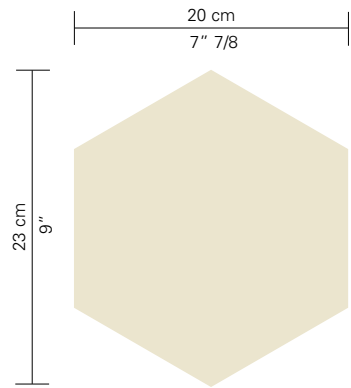
**LIQUIRIZIA (Q)**

**NEBBIA (Q)**

**MACADAM (Q)**

**ASFALTO (Q)**





**LATTE (E)**

**GRANO (E)**

**ZAFFERANO (E)**

**FANGO (E)**

**CILESTRINO (E)**

**TURCHINO (E)**

**ATLANTICO (E)**

**CORDA (E)**

**ÉCRU (E)**

**TABACCO (E)**

**CIOCCOLATO (E)**

**MARE (E)**

**PRUSSIA (E)**

**TAN (E)**

**LOTO (E)**

**FRESIA (E)**

**ARGENTO (E)**

**LICHENE (E)**

**CARAIBI (E)**

**PETROLIO (E)**

**RUGGINE (E)**

**DIASPRO (E)**

**PORFIDO (E)**

**PISTACCHIO (E)**

**MUSCHIO (E)**

**LIQUIRIZIA (E)**

**NEBBIA (E)**

**MACADAM (E)**

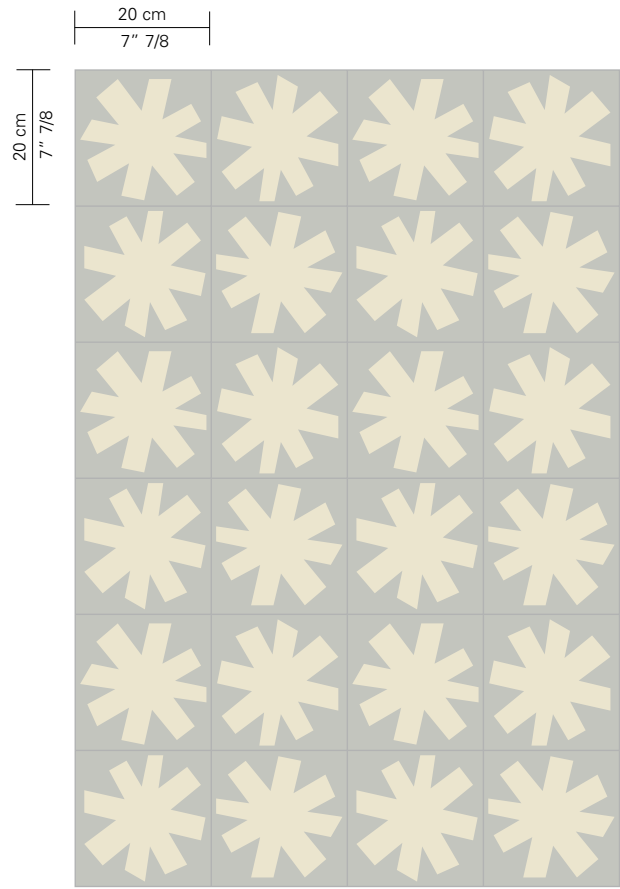
**ASFALTO (E)**



Collezione  
**NAVONE**

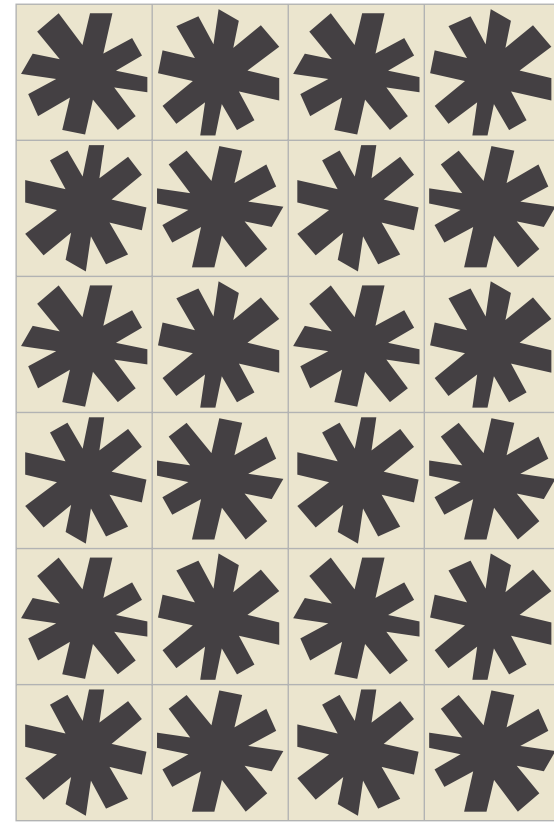
design Paola Navone





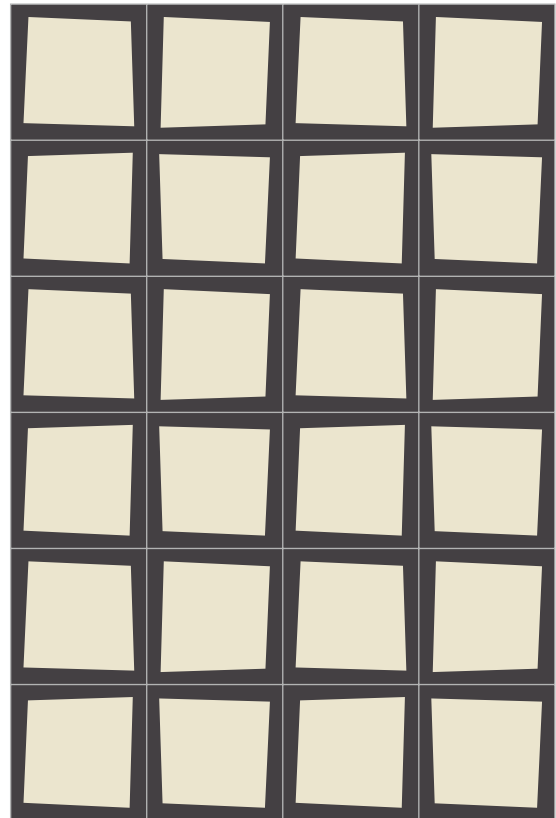
Nebbia, Latte

**ASTERISQUE LEGER**



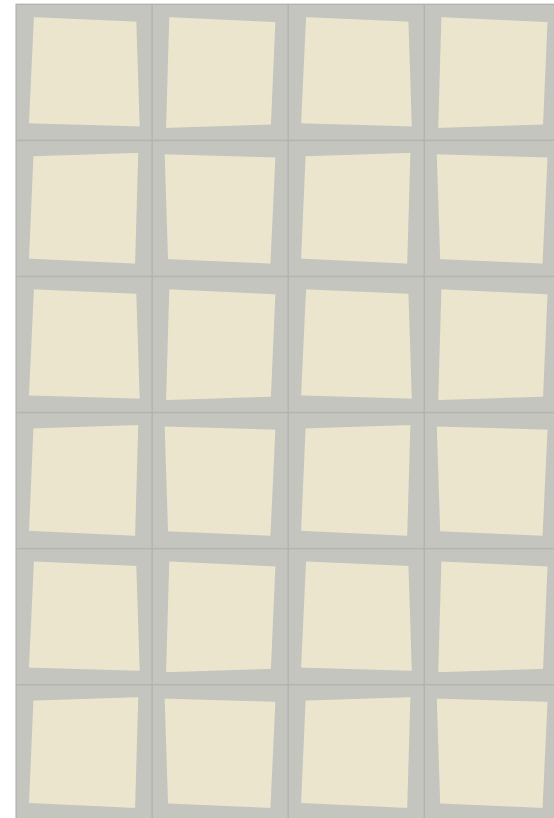
Latte, Liquirizia

**ASTERISQUE B&W**



Liquirizia, Latte

**CARREAU B&W**



Nebbia, Latte

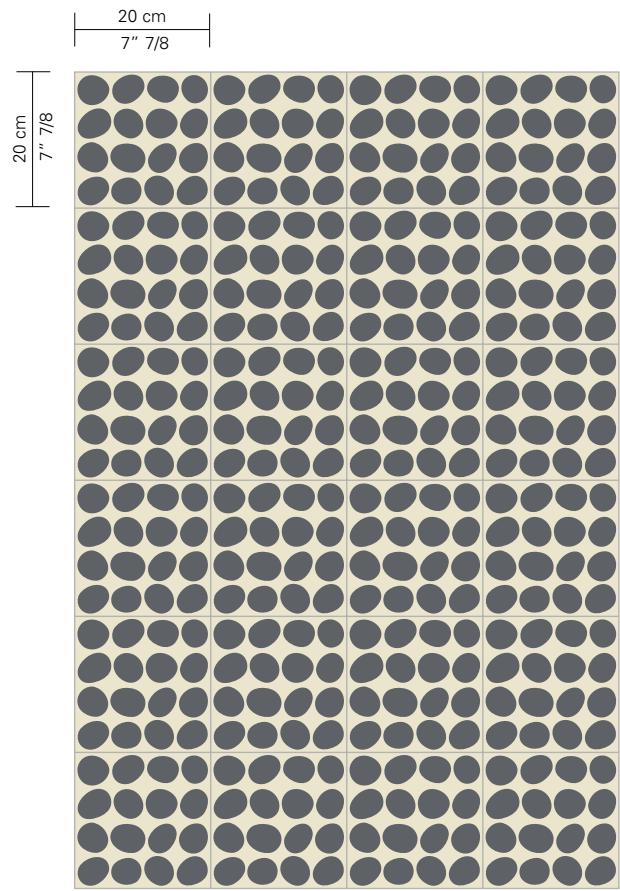
**CARREAU LEGER**



**CARREAU B&W**







Latte, Asfalto

**PIENO WHITE**

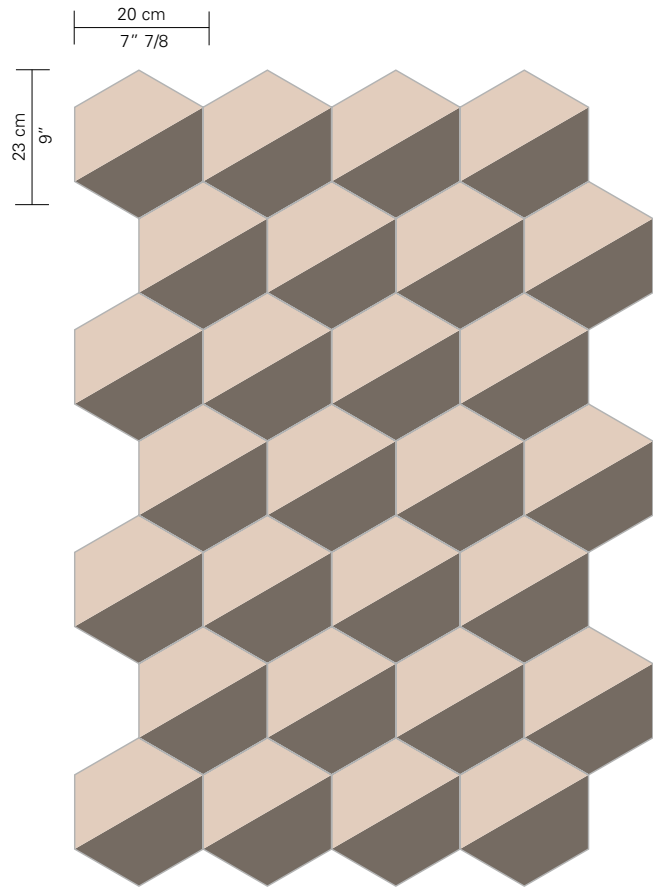


**BANDES VINTAGE**



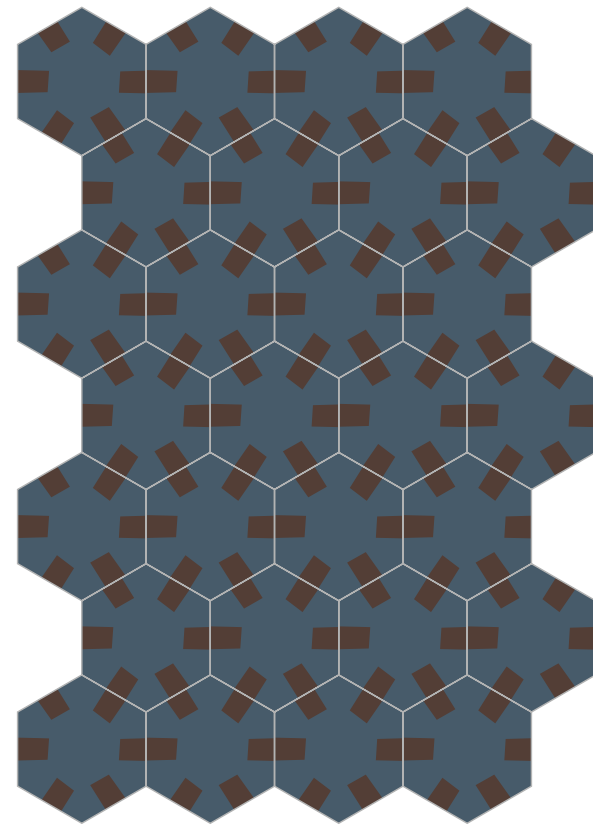
**PIENO WHITE - LATTE (Q)**





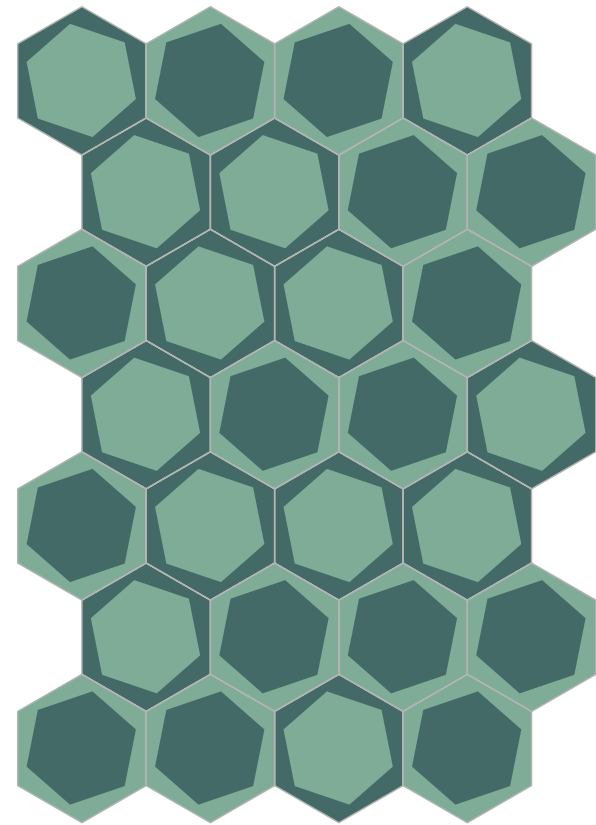
HALF POWDER

Fango, Loto



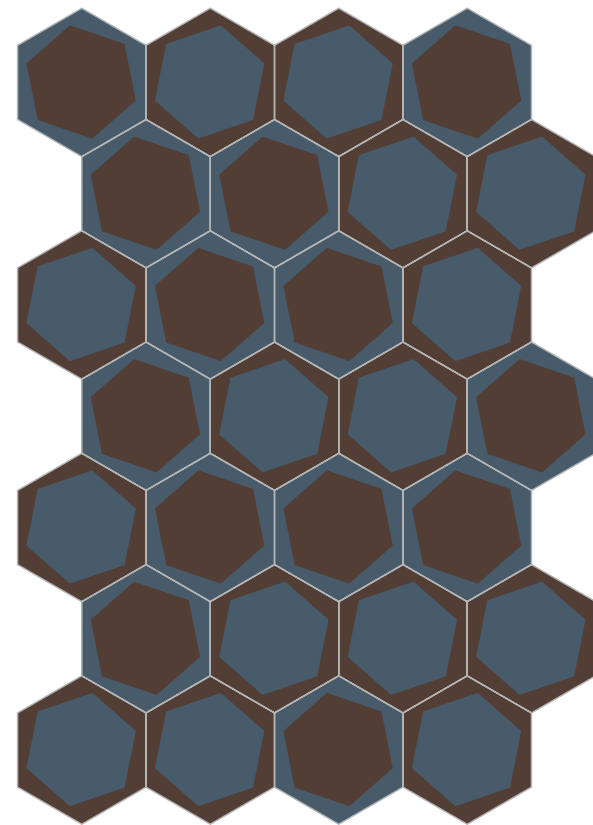
TAC NIGHT

Prussia, Cioccolato



ON / OFF TEAL

Petrolio, Carabi



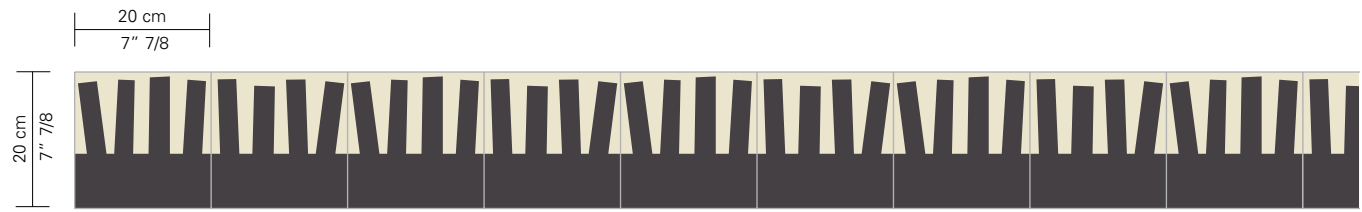
ON / OFF NIGHT

Prussia, Cioccolato



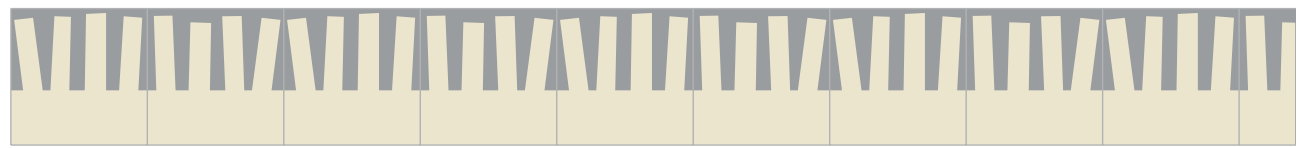
TAC NIGHT





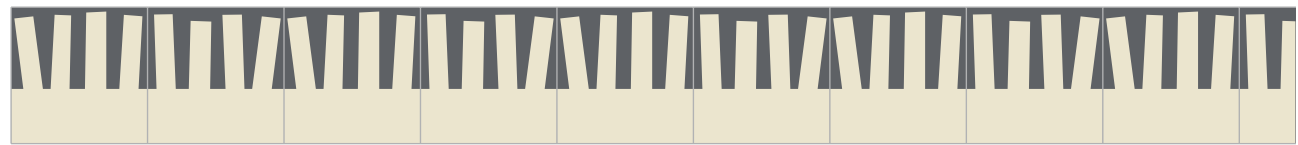
**FRINGE BLACK (A + B)**

Latte, Liquirizia



**FRINGE LIGHT (A + B)**

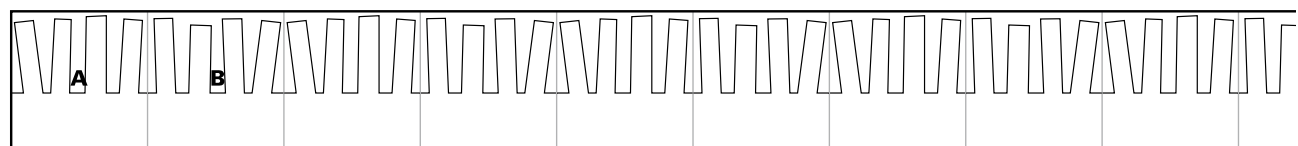
Macadam, Latte



**FRINGE WHITE (A + B)**

Asfalto, Latte

COLLEZIONE NAVONE



**FRINGE (A + B)**



**FRINGE WHITE - PIENO WHITE - ASFALTO (Q)**

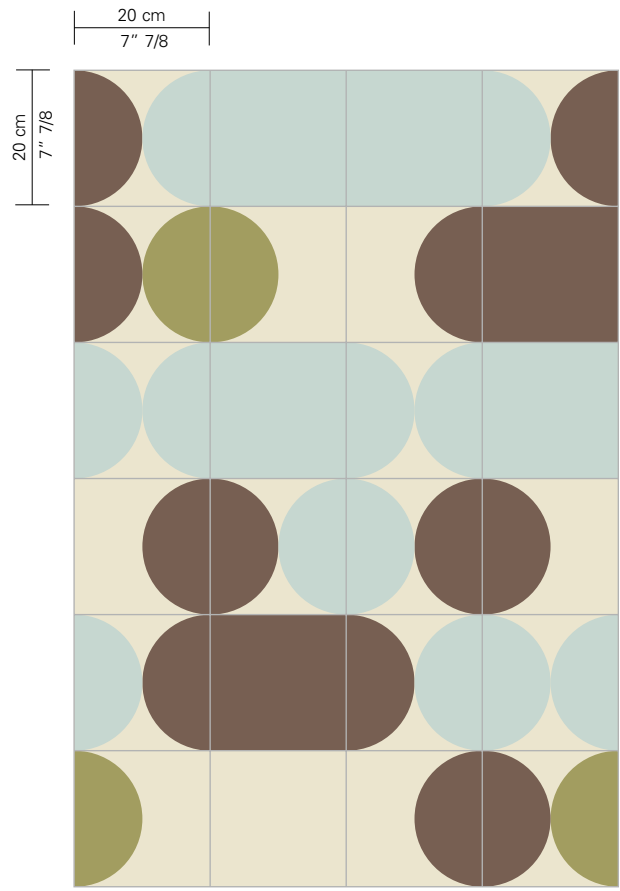


Collezione  
**MAHDAVI**

design India Mahdavi

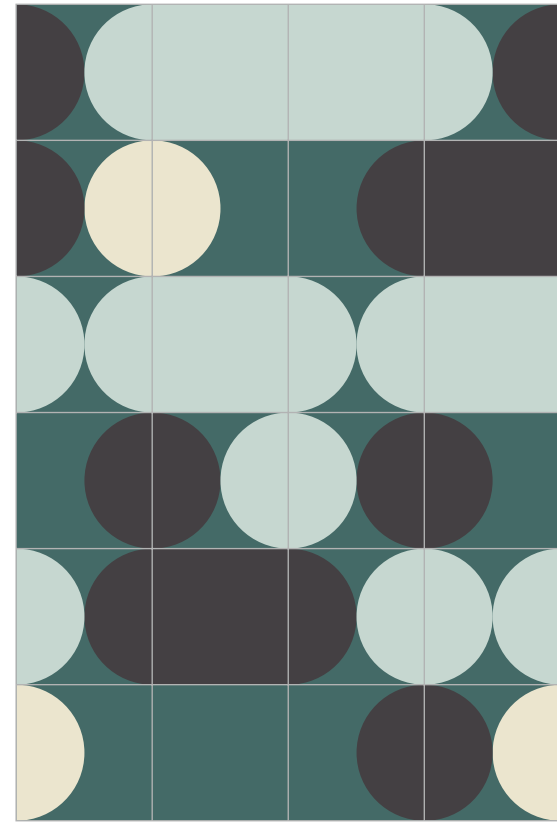






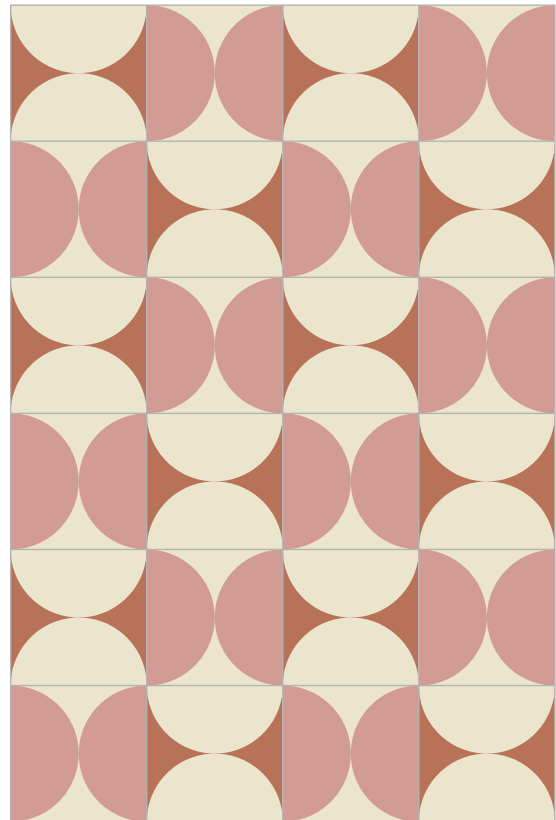
Pistacchio, Cilestrino, Tabacco, Latte

**PILL COCKTAIL 21**



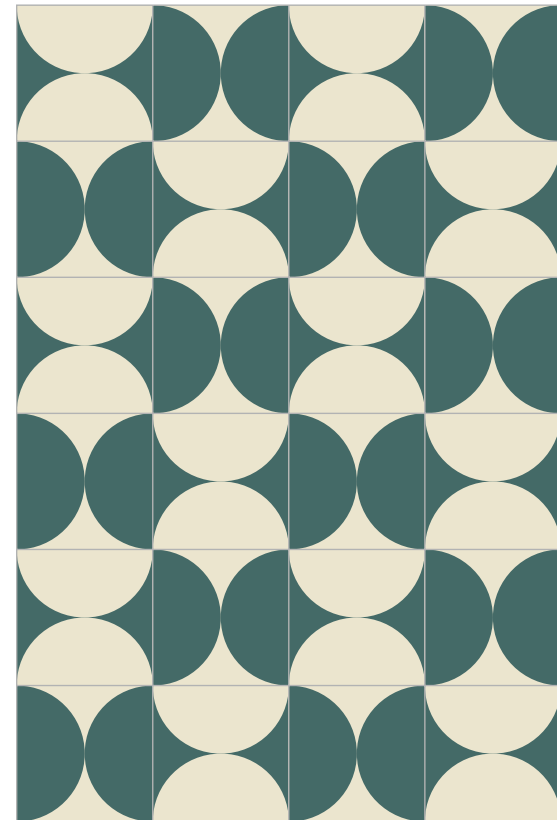
Latte, Cilestrino, Petrolio, Liquirizia

**PILL COCKTAIL 30**



Fresia, Ruggine, Latte

**BUTTERFLY 8**

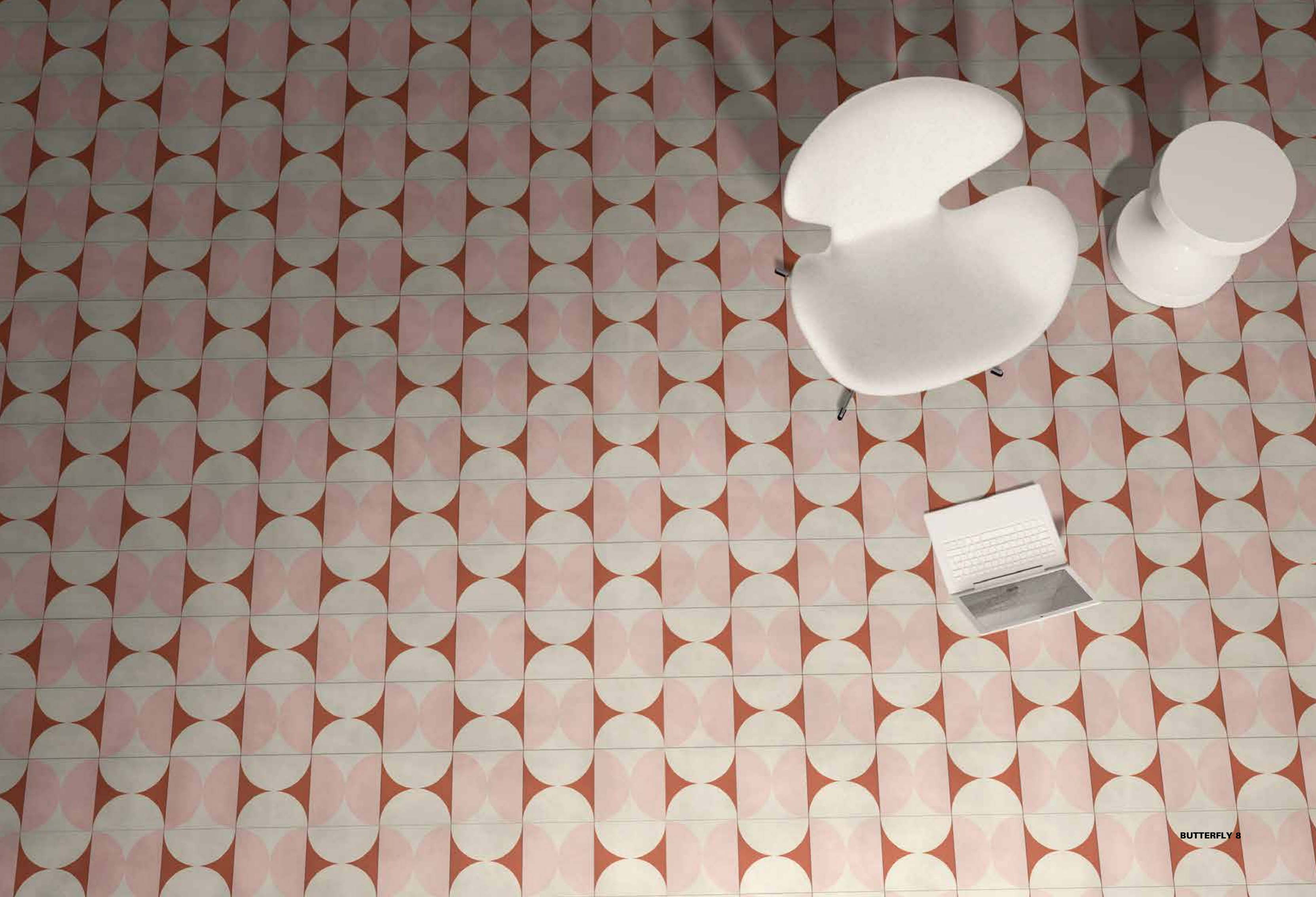


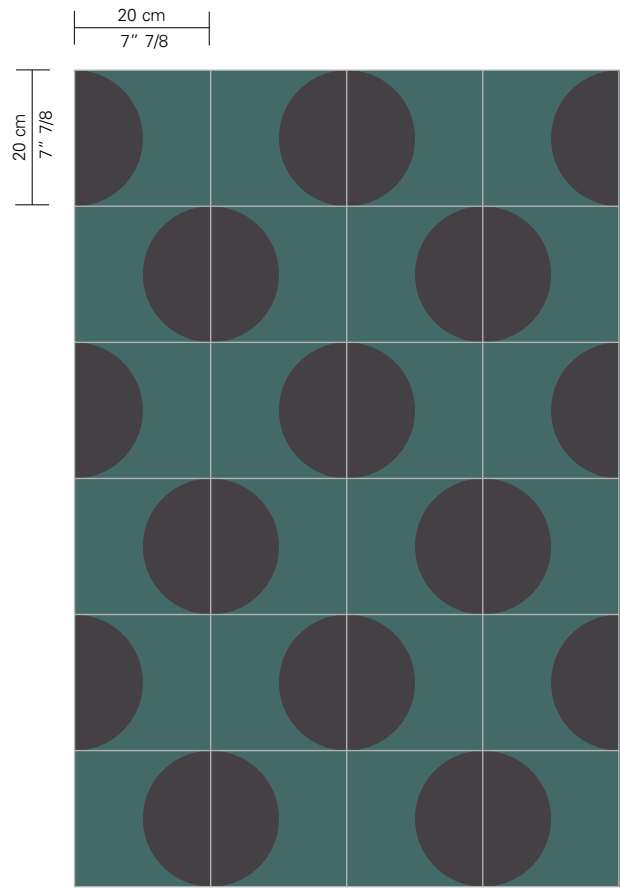
Petrolio, Latte

**BUTTERFLY 2**



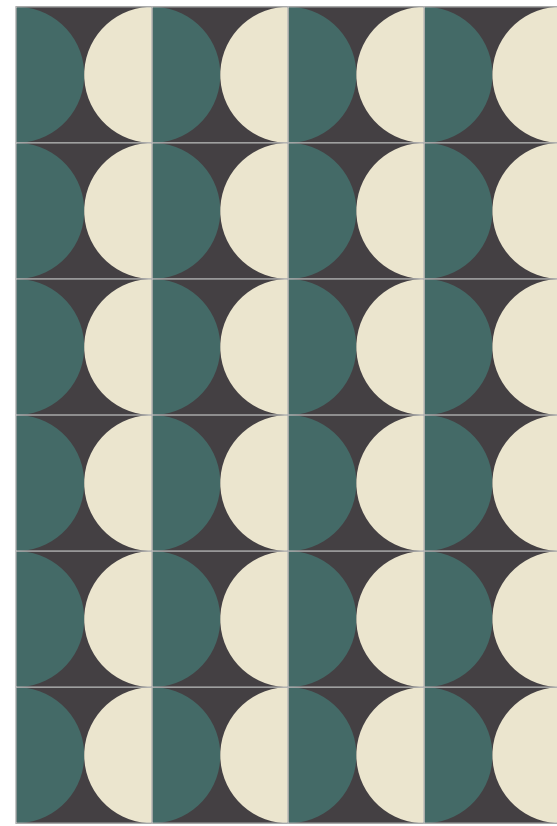
**PILL COCKTAIL 30**





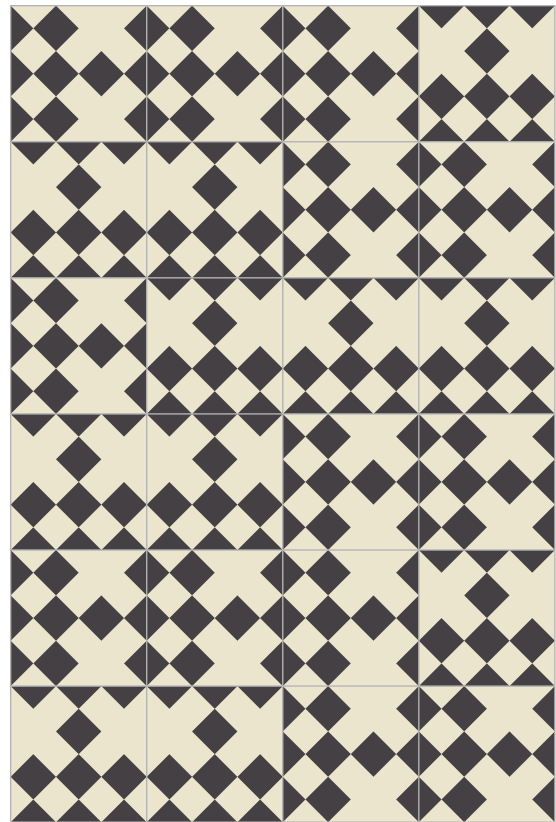
Petrolio, Liquirizia

DOT 5



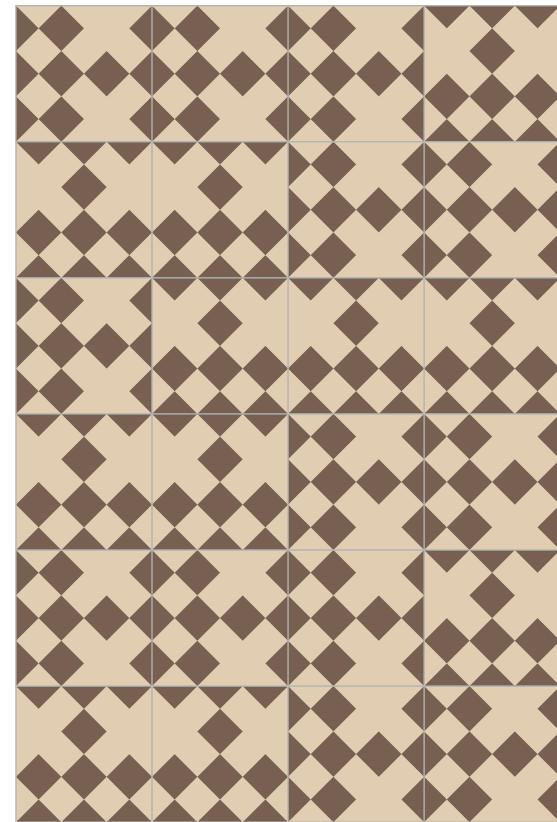
Latte, Petrolio, Liquirizia

ECLIPSE 25



Liquirizia, Latte

DOMINO 10



Tan, Tabacco

DOMINO 12



DOT 5

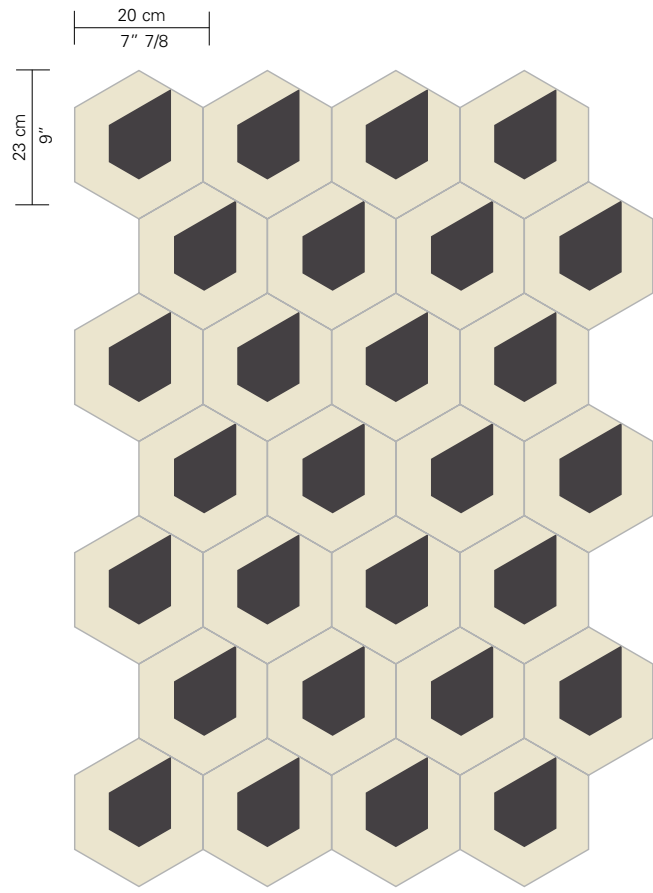


DOMINO 12



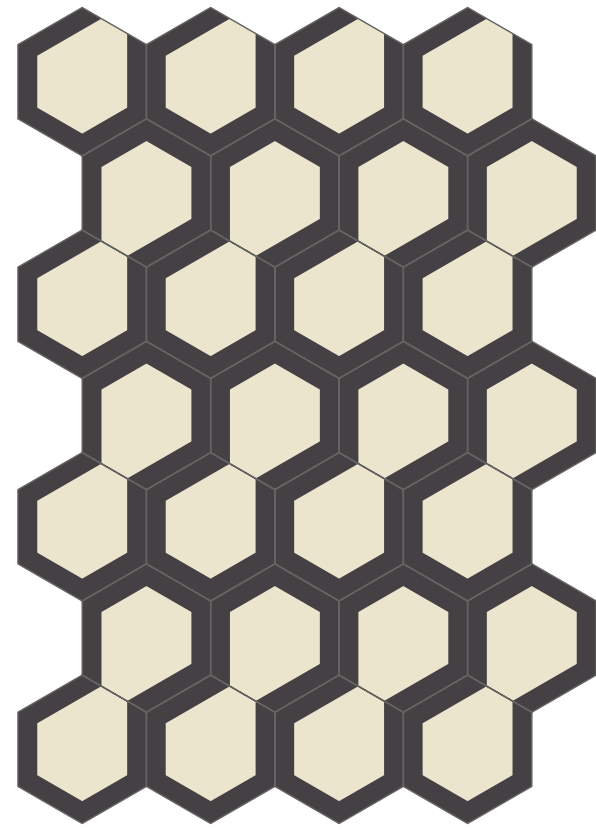
DOMINO 10





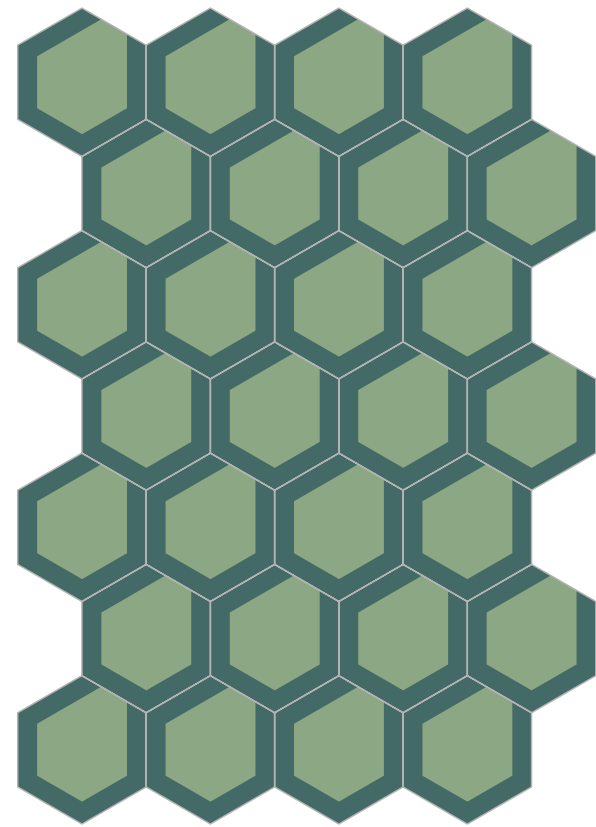
**RAIN 10**

Latte, Liquirizia



**IN THE SKY 10**

Latte, Liquirizia



**LUCY 14**

Lichene, Petrolio

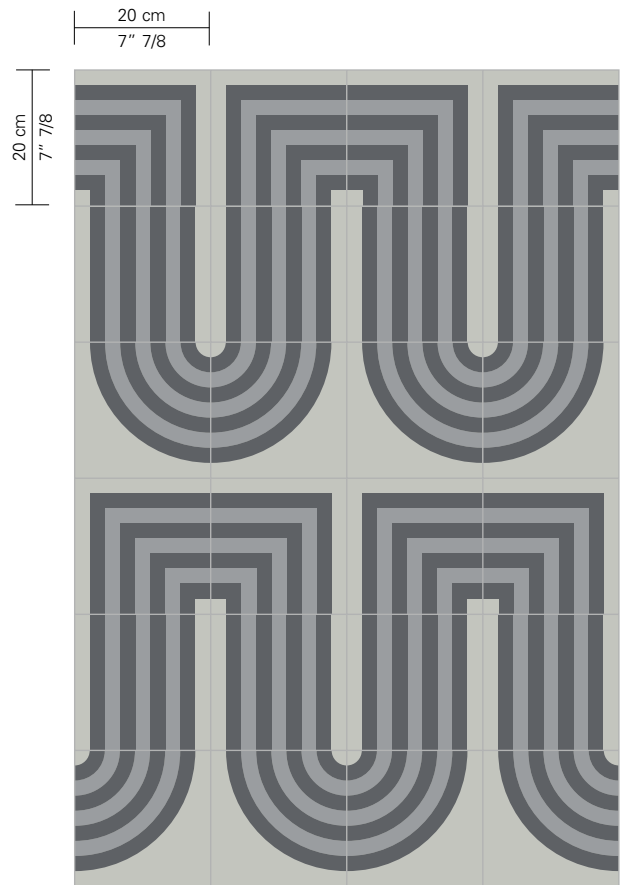


**IN THE SKY 10**

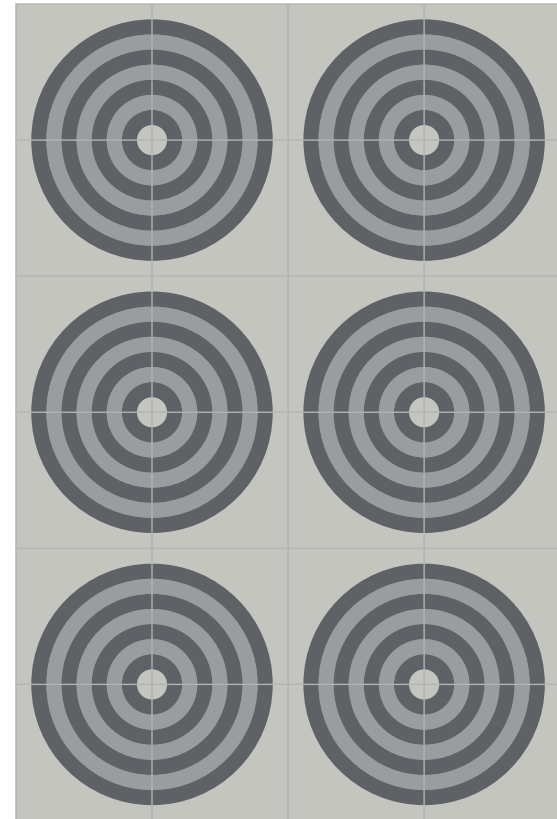


Collezione  
**DIXON**

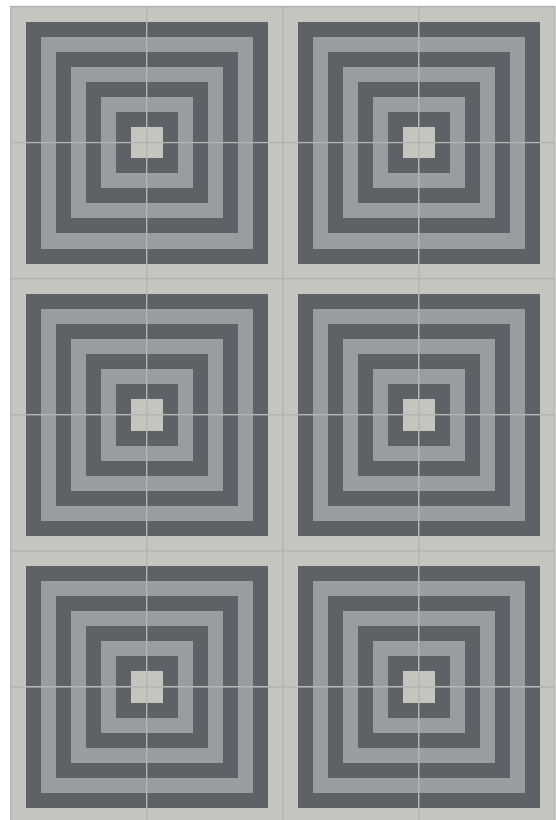
design Tom Dixon



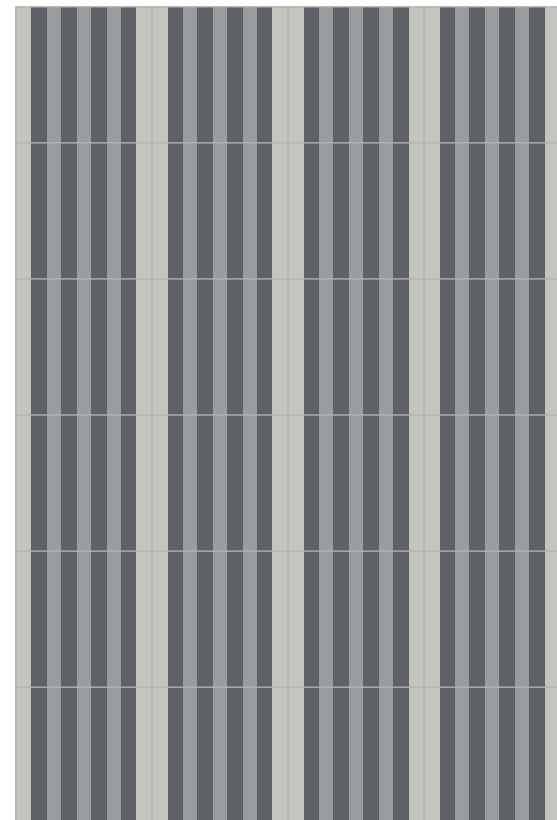
**DUCT GREY**



**PIPE CURVE GREY**



**PIPE CORNER GREY**



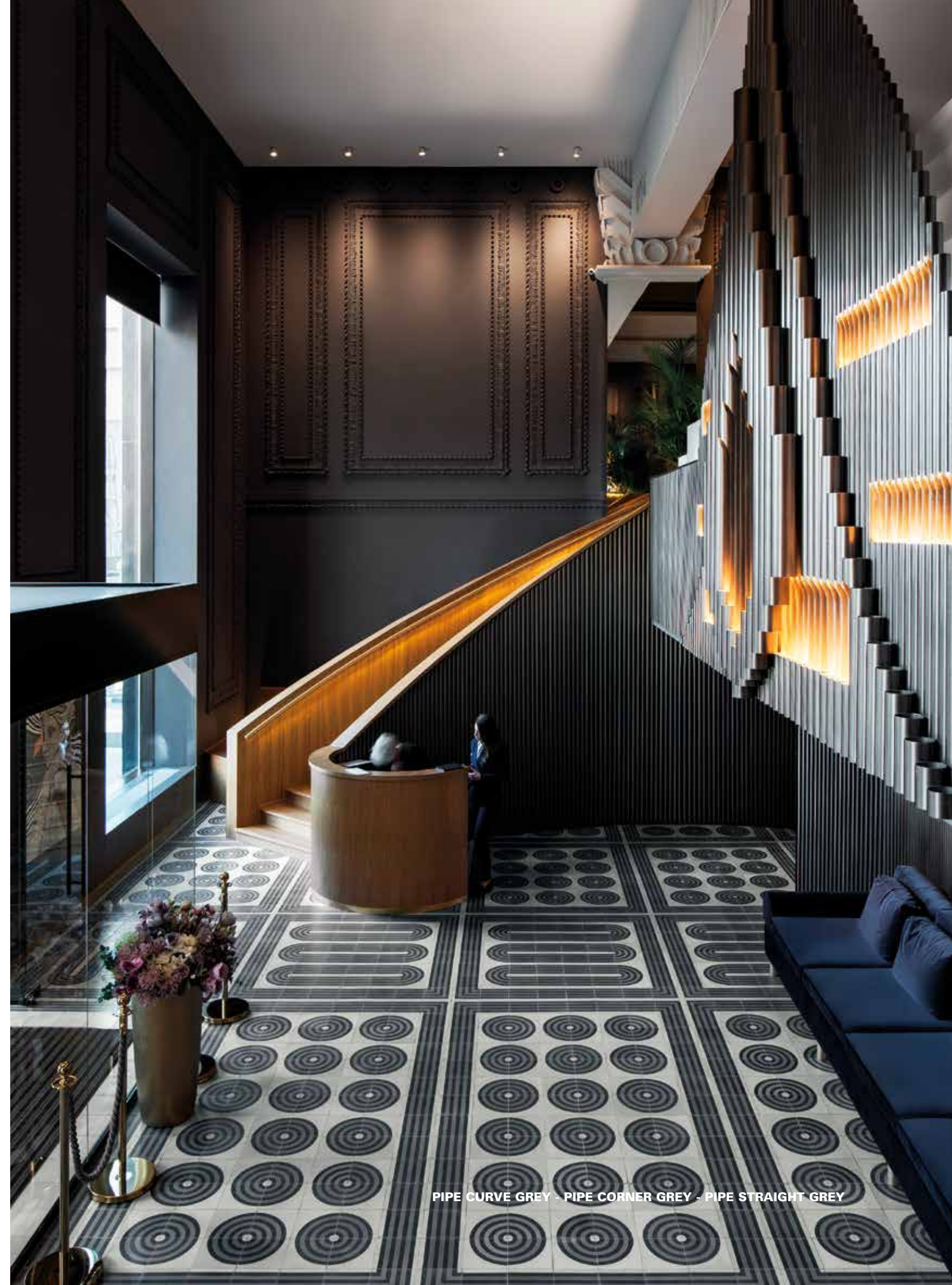
**PIPE STRAIGHT GREY**



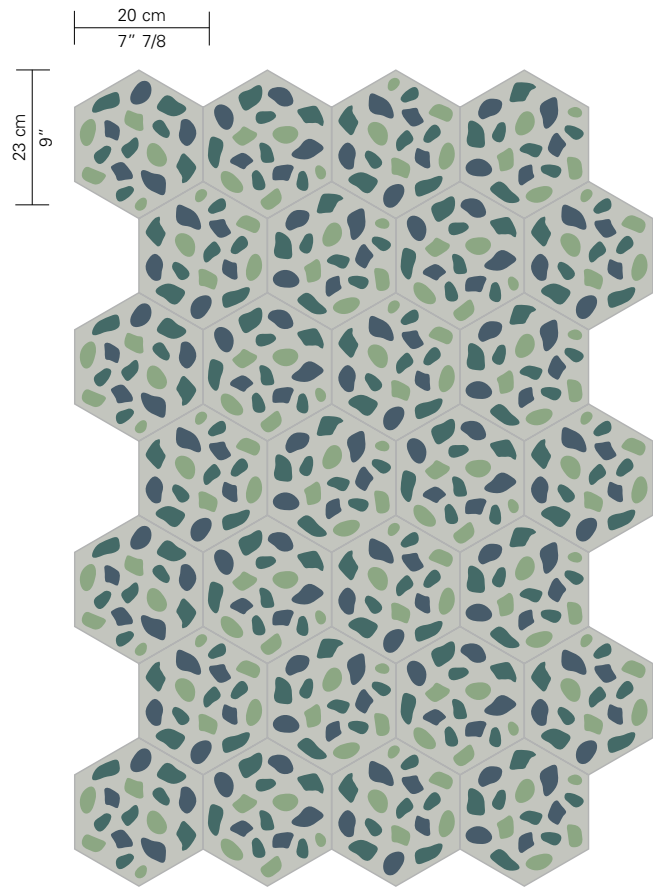




GRIT DARK GREY

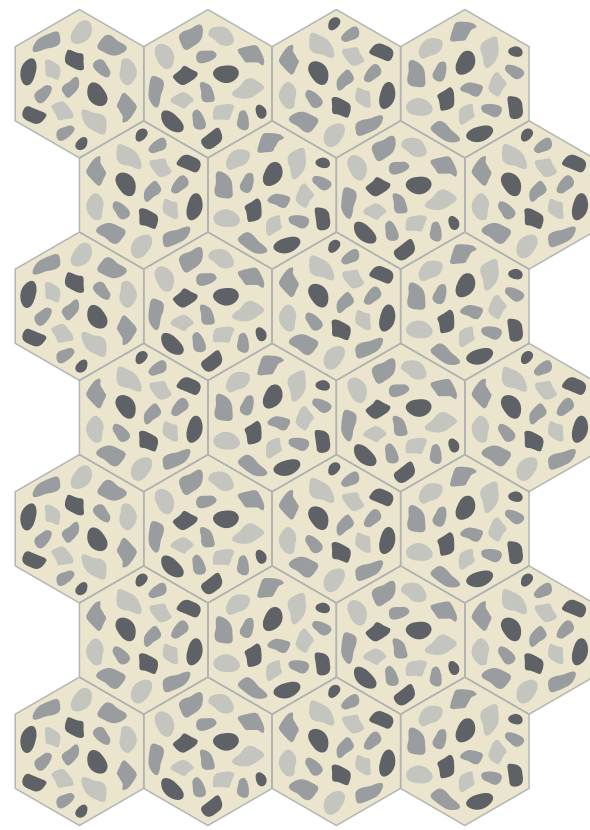


PIPE CURVE GREY - PIPE CORNER GREY - PIPE STRAIGHT GREY



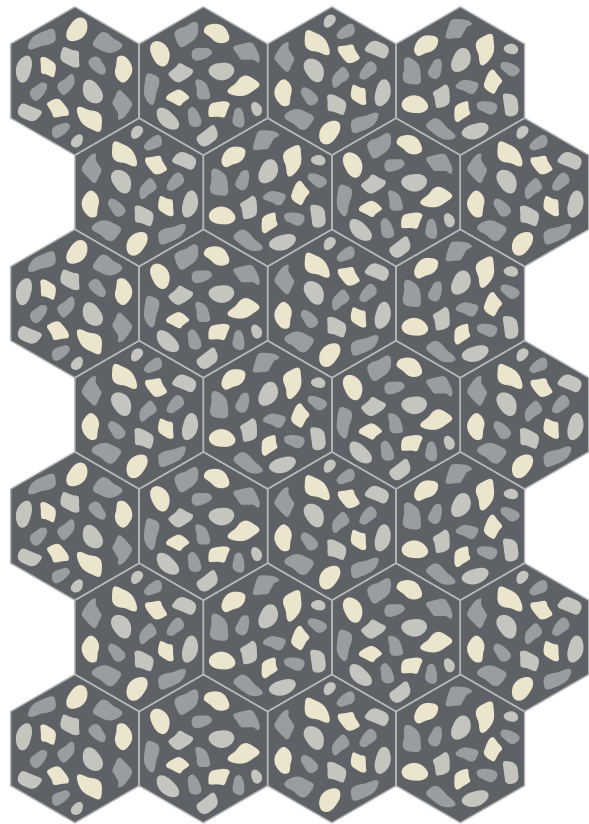
**GRIT BLUE**

Petrolio, Prussia, Lichene, Nebbia



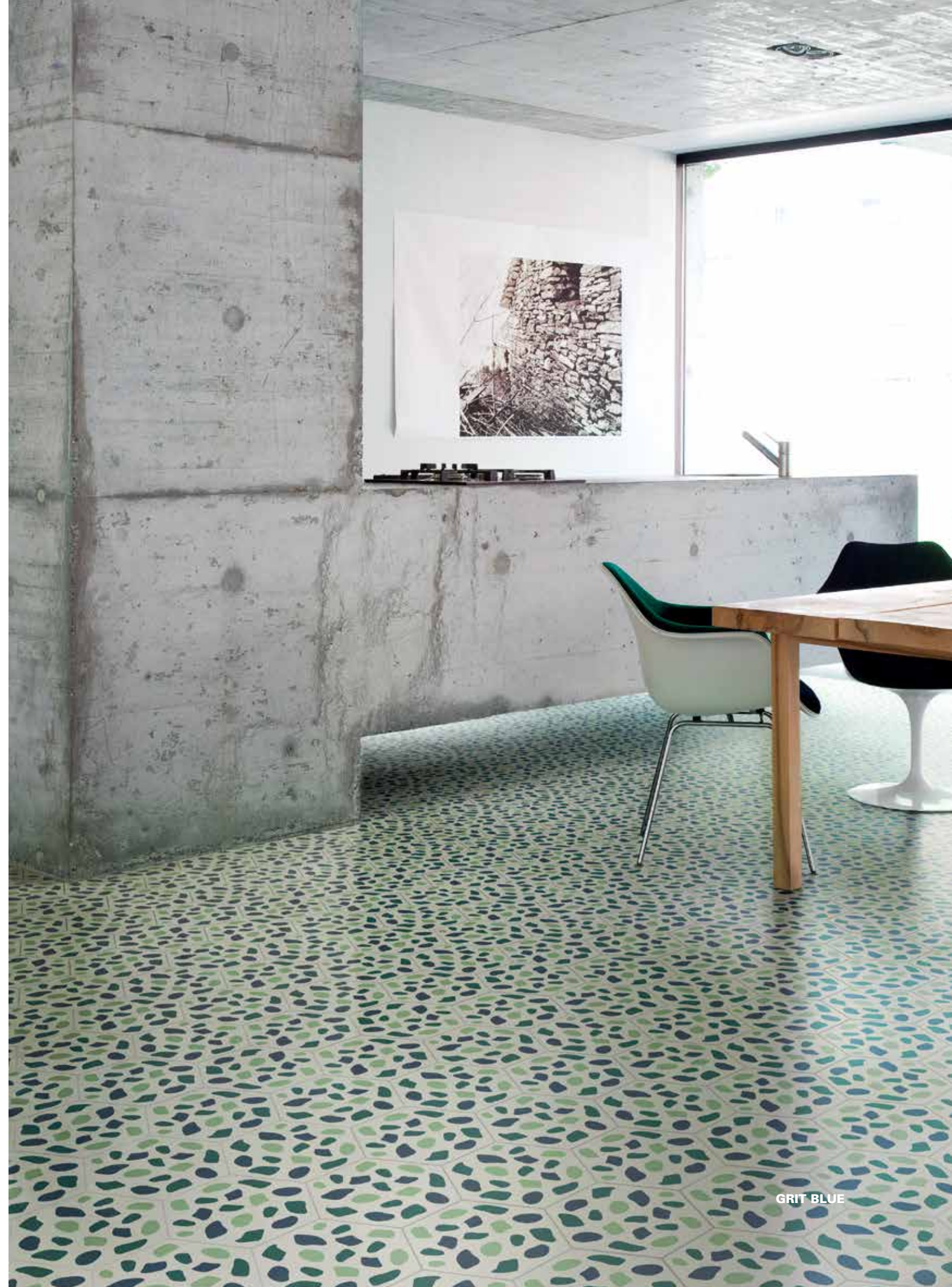
**GRIT LIGHT GREY**

Latte, Nebbia, Macadam, Asfalto



**GRIT DARK GREY**

Latte, Nebbia, Macadam, Asfalto



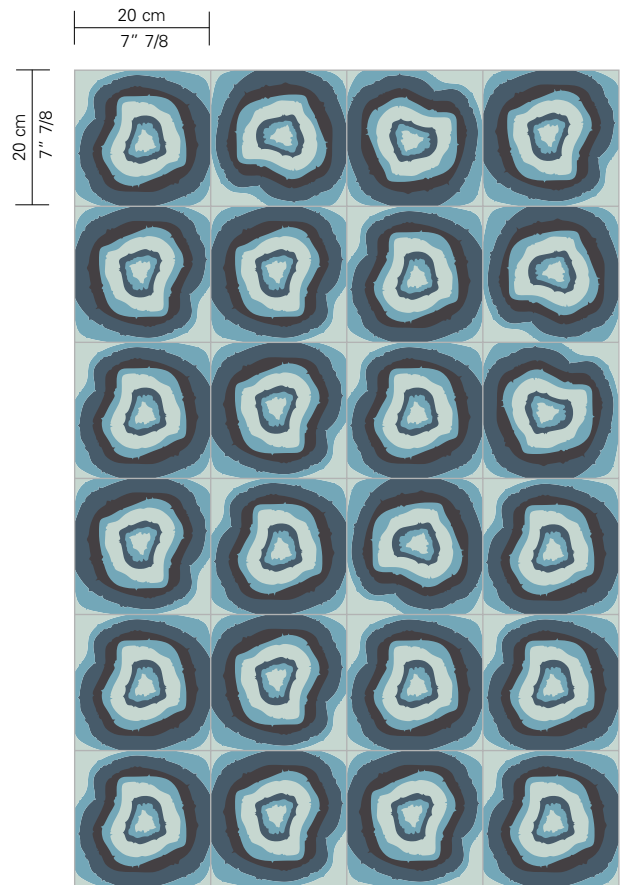
**GRIT BLUE**



Collezione  
**CAMPANA**

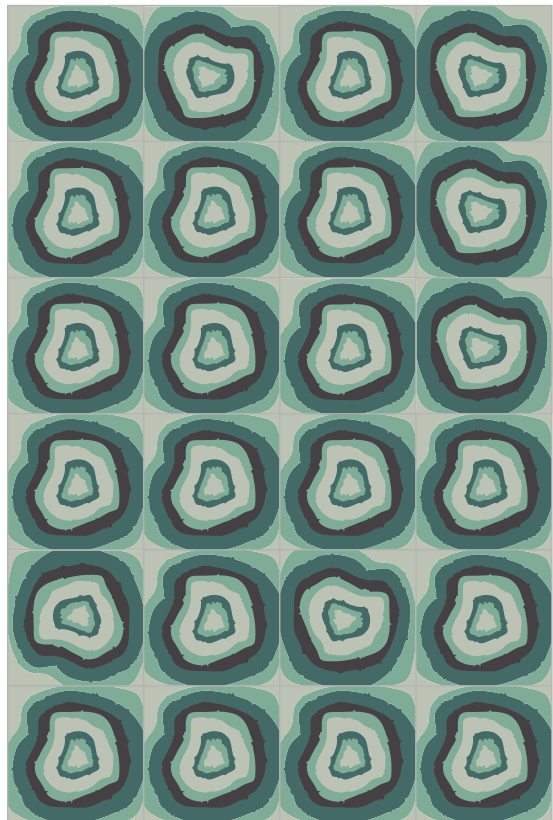
design Fernando & Humberto Campana





Cilestrino, Turchino, Prussia, Liquirizia

**BRAZILIAN AGATA BLU**



Argento, Caraibi, Petrolio, Liquirizia

**BRAZILIAN AGATA VERDE**

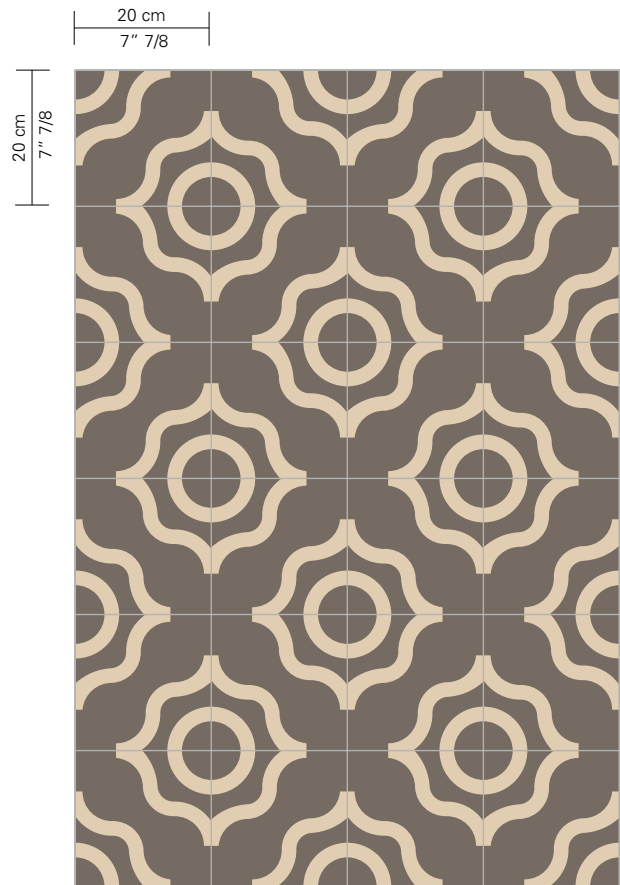




Collezione  
**DAL BIANCO**

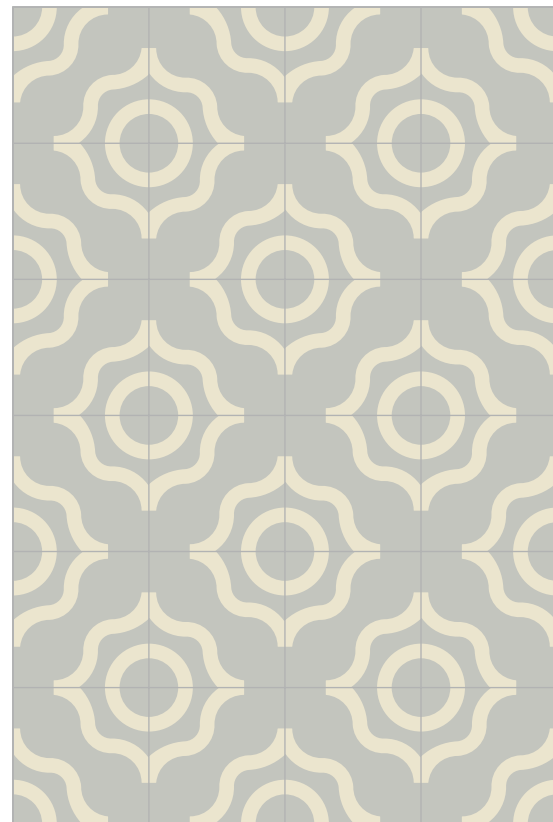
design Carlo Dal Bianco





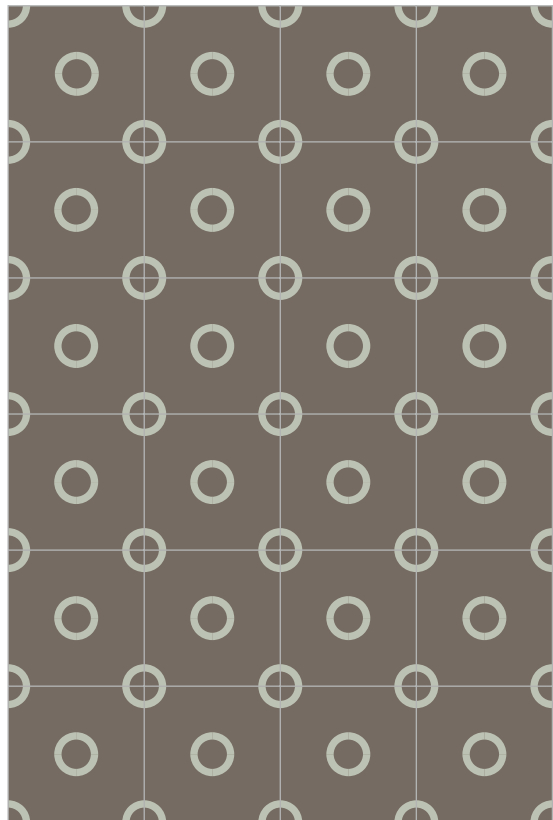
Fango, Tan

**KARL TORTORA**



Nebbia, Latte

**KARL FROST**



Fango, Argento

**MOULD CASTAGNO**



Liquirizia, Latte

**LENS NERO**



**KARL FROST**



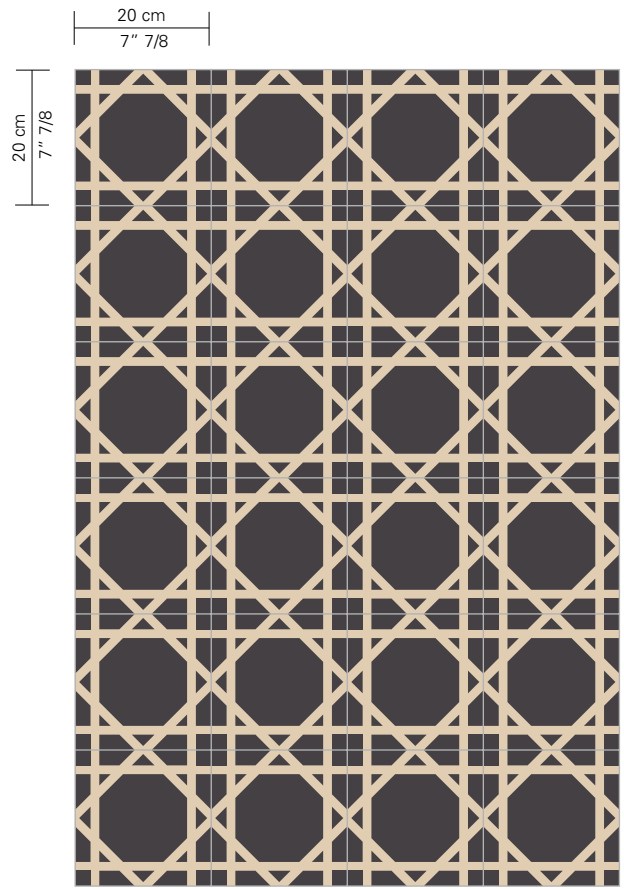


MOULD CASTAGNO

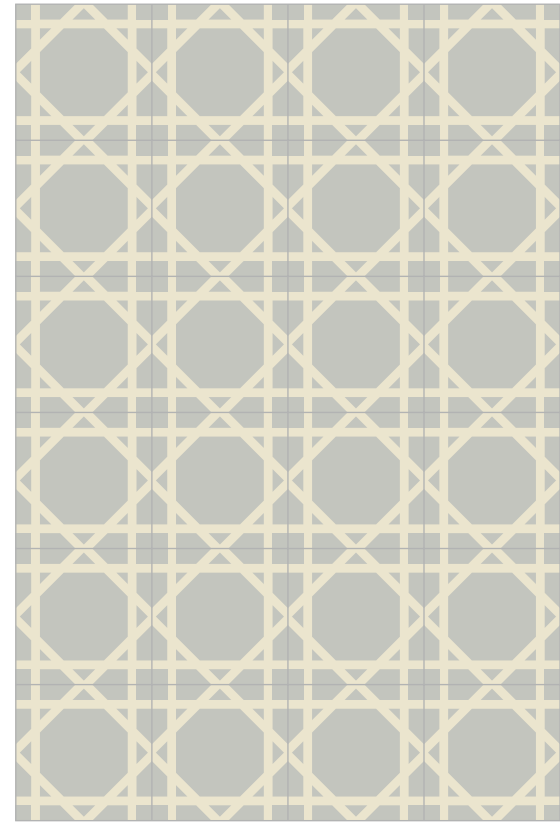


LENS NERO

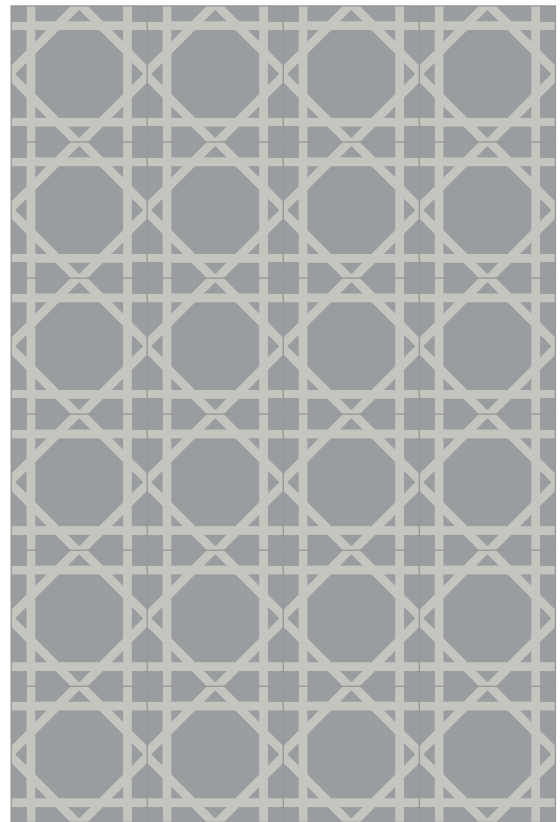




**GUSTAV MARQUINIA**



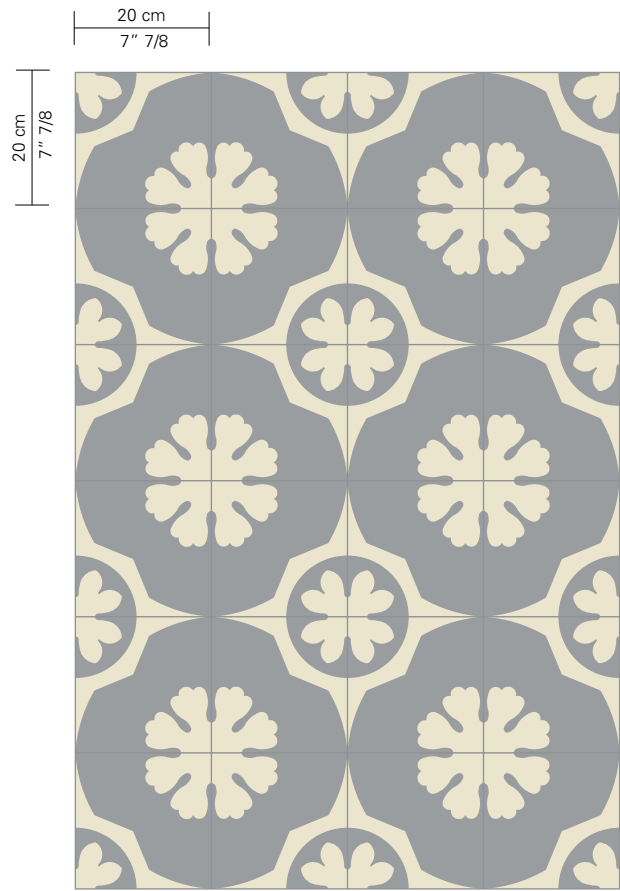
**GUSTAV FROST**



**GUSTAV GRIGIO**







Macadam, Latte

**TWIGGY BETON**



Liquirizia, Latte

**TWIGGY NERO**



Latte, Liquirizia

**ZAG VANIGLIA**



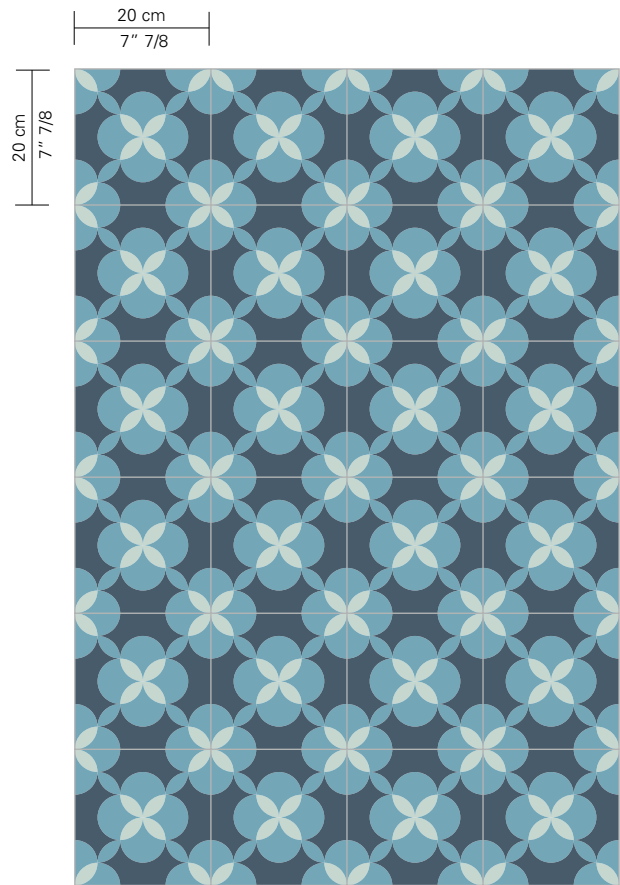
Nebbia, Latte

**ZAG FROST**



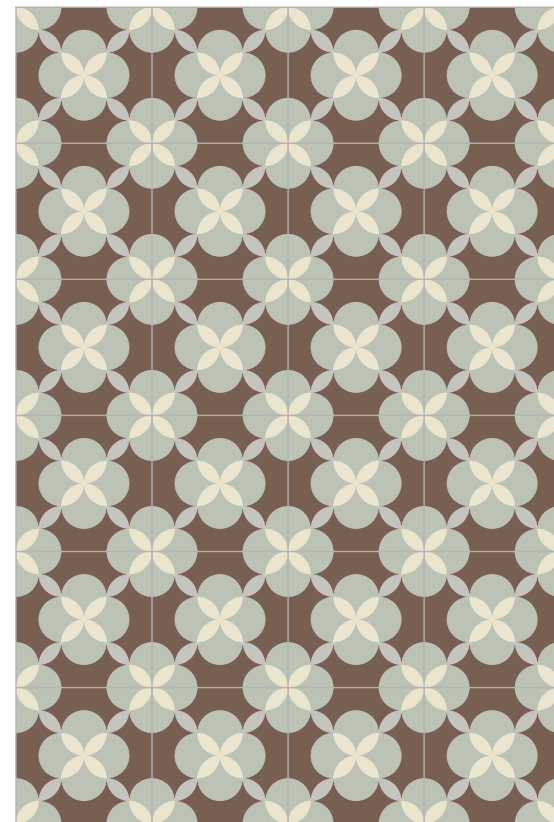
**ZAG VANIGLIA**





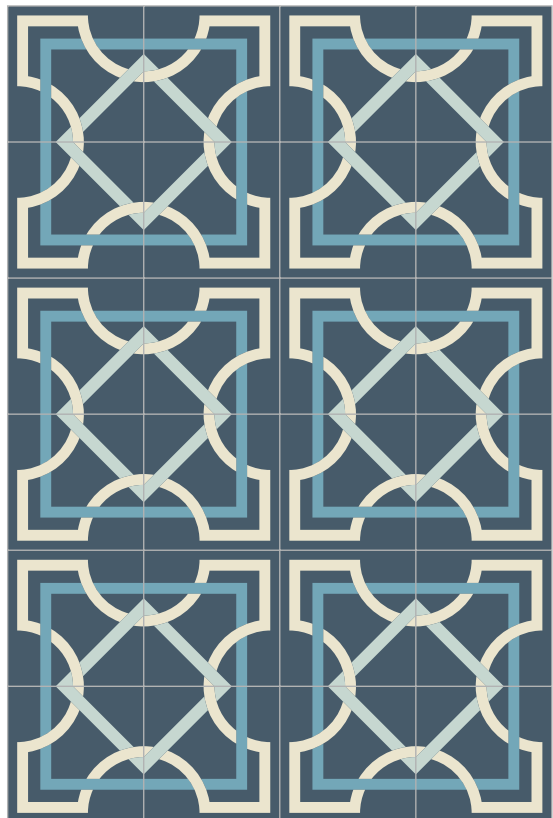
Prussia, Cilestrino, Turchino

**EDEN PACIFIC**



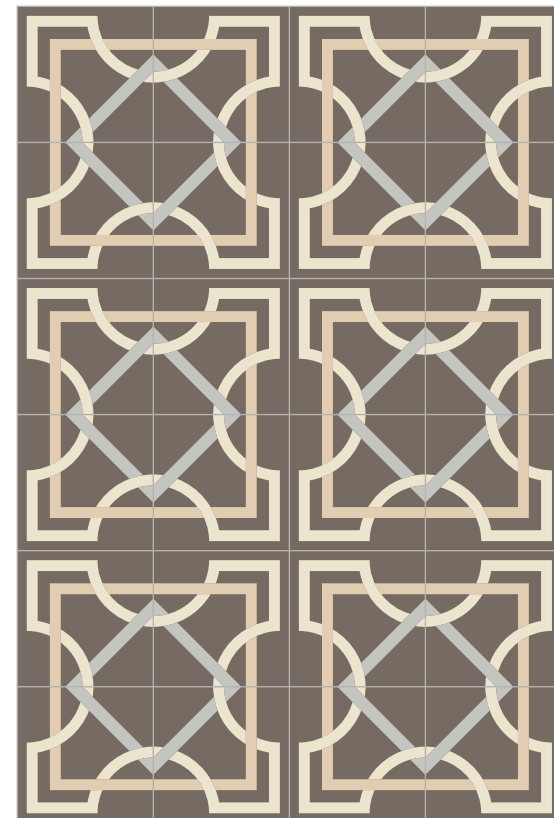
Tabacco, Latte, Nebbia, Argento

**EDEN WINTER**



Prussia, Latte, Cilestrino, Turchino

**TAPIS MARINO**



Fango, Latte, Nebbia, Tan

**TAPIS ONICE**



**EDEN PACIFIC**

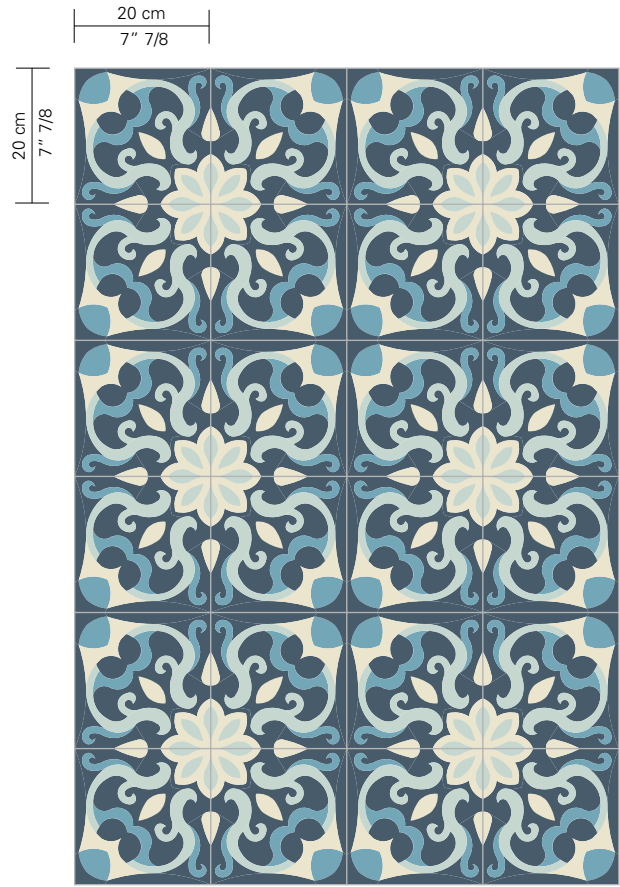


EDEN WINTER



TAPIS MARINO





Prussia, Latte, Cieistrino, Turchino

**SPELL MARINO**



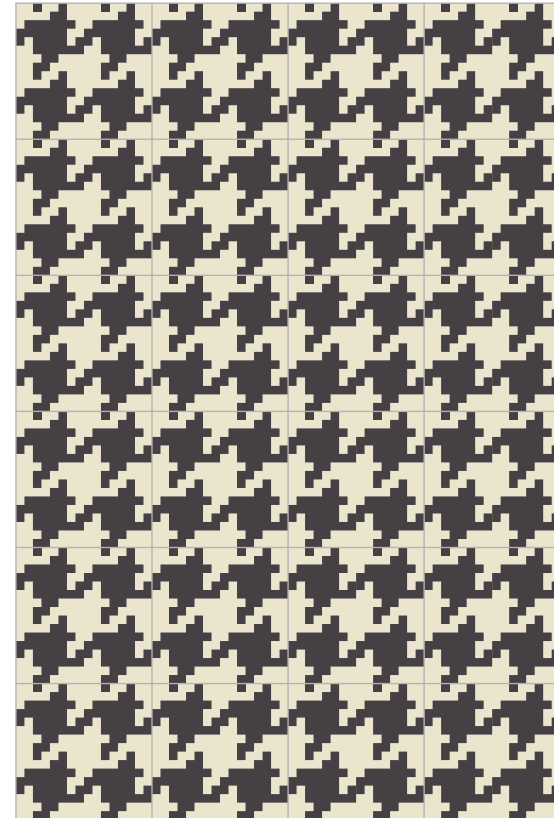
Prussia, Macadam, Asfalto

**CUPCAKE SHARK**



Liquirizia, Tan

**DALIDA MARQUINIA**



Latte, Liquirizia

**TRACES VANIGLIA**



**SPELL MARINO**



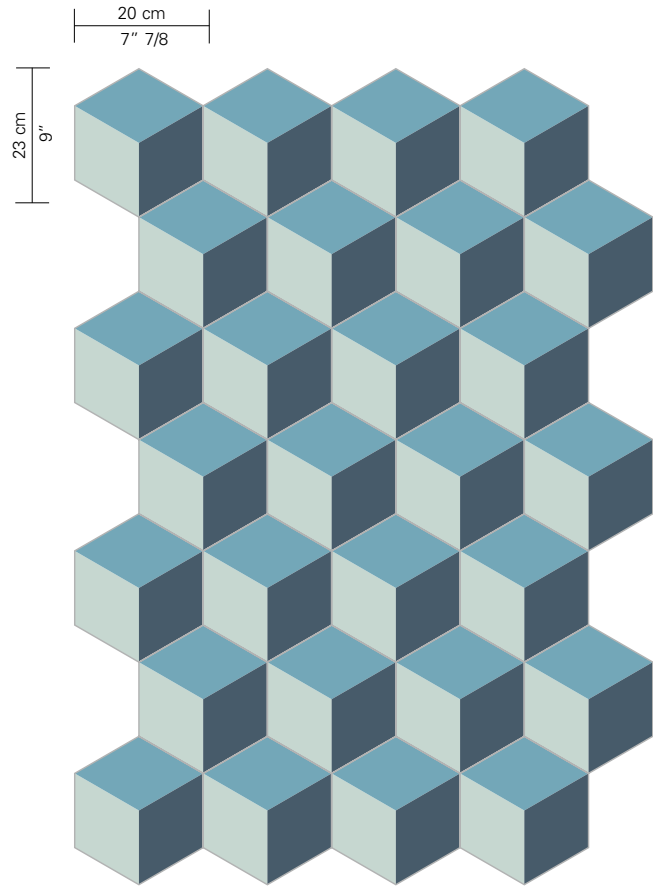
CUPCAKE SHARK



TRACES VANIGLIA

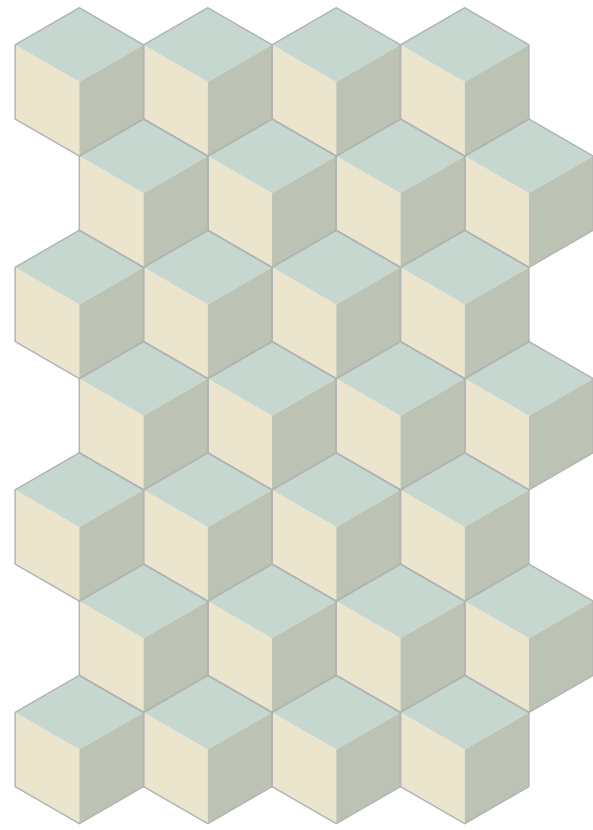






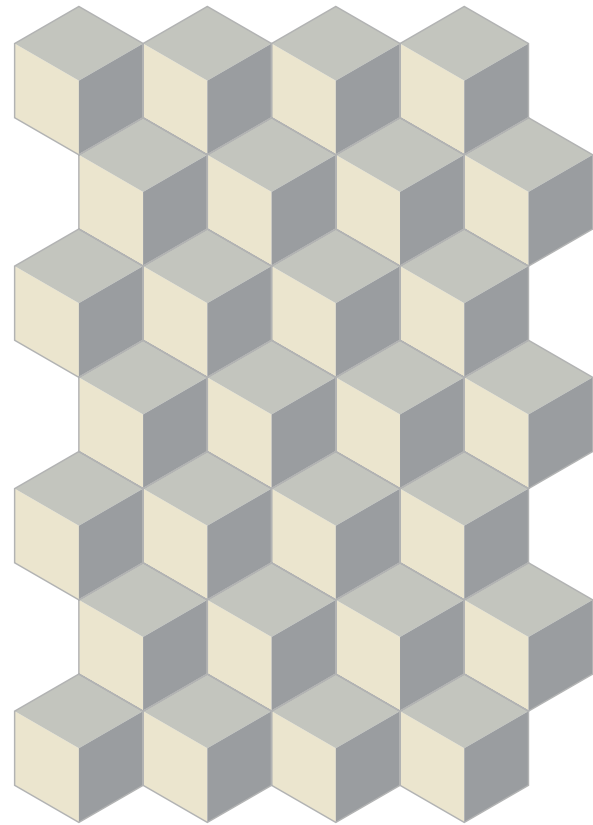
**CUBIC PACIFIC**

Cilestrino, Turchino, Prussia



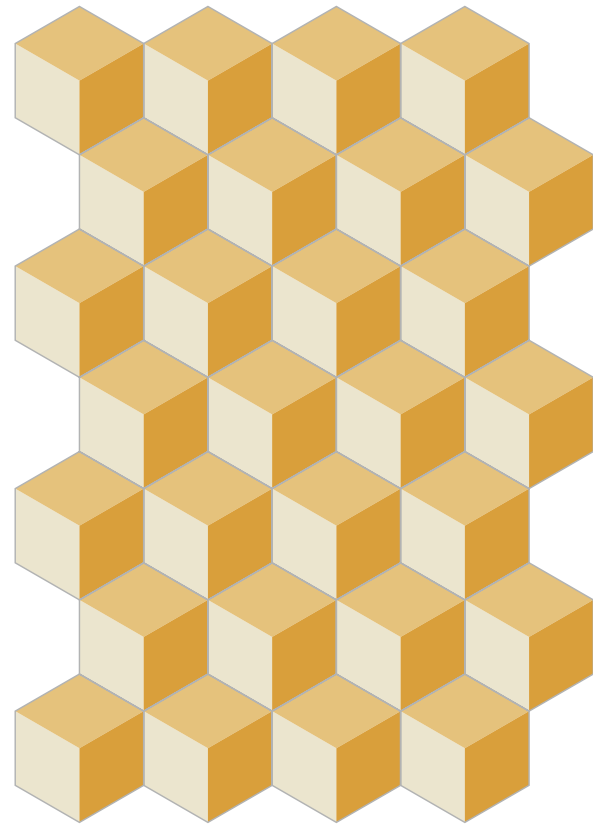
**CUBIC ICEBERG**

Latte, Cilestrino, Argento



**CUBIC PLATINO**

Latte, Nebbia, Macadam



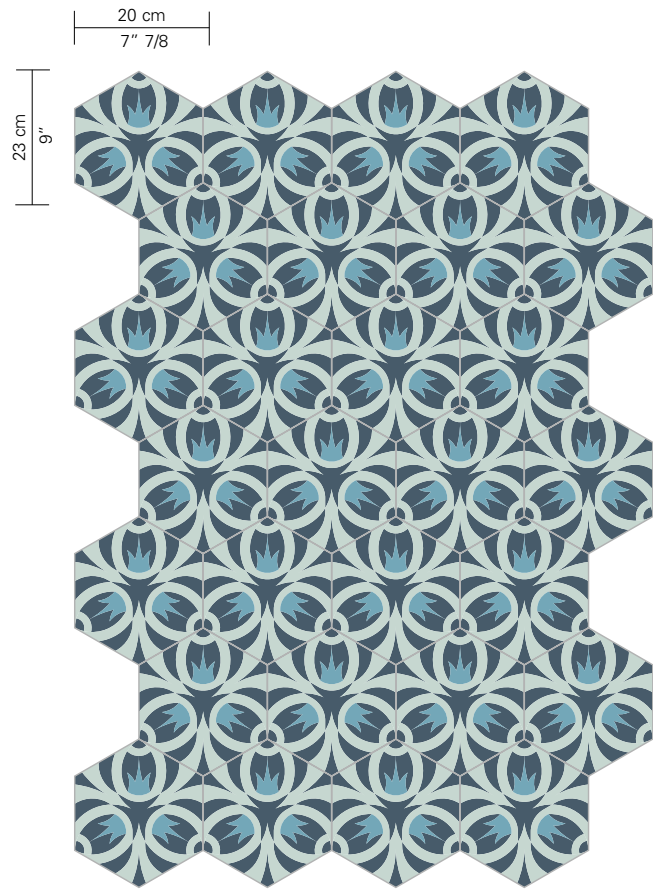
**CUBIC SUN**

Latte, Grano, Zafferano



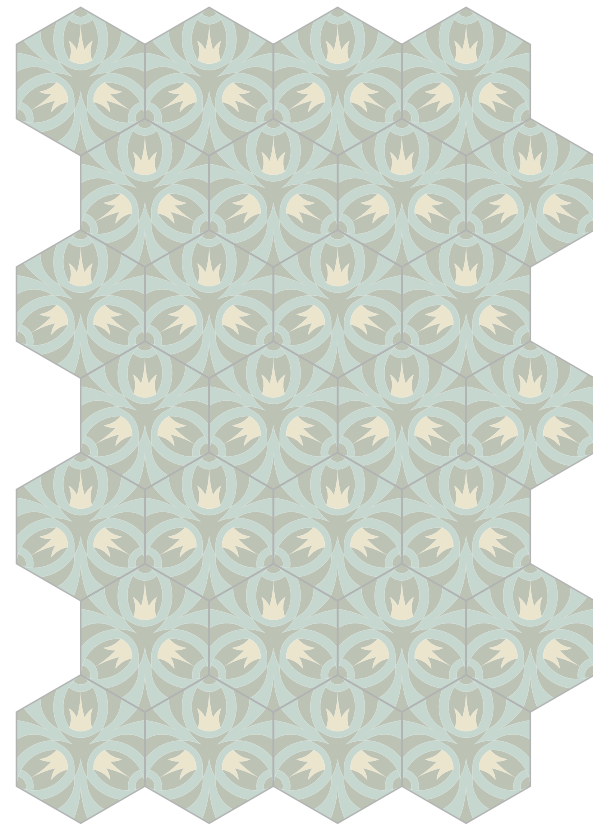
**CUBIC ICEBERG**





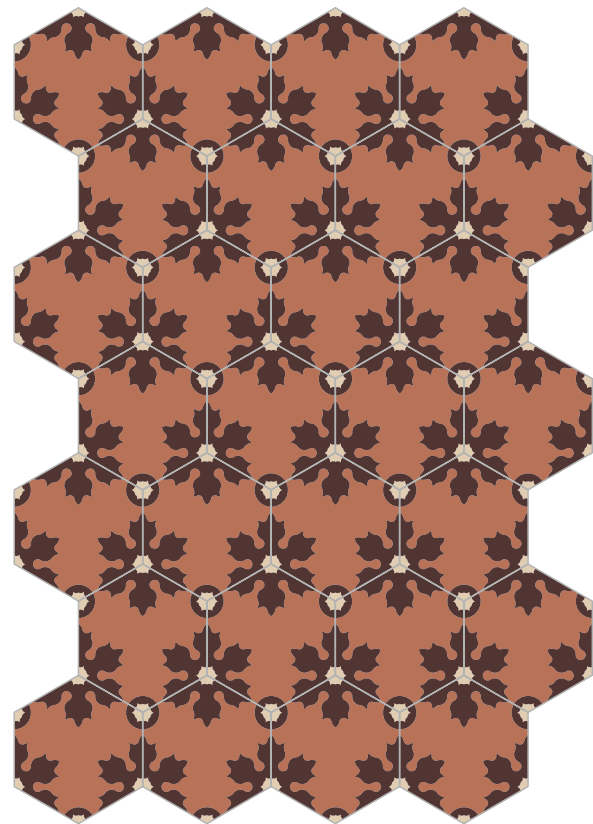
OAK PACIFIC

Prussia, Turchino, Cilestrino



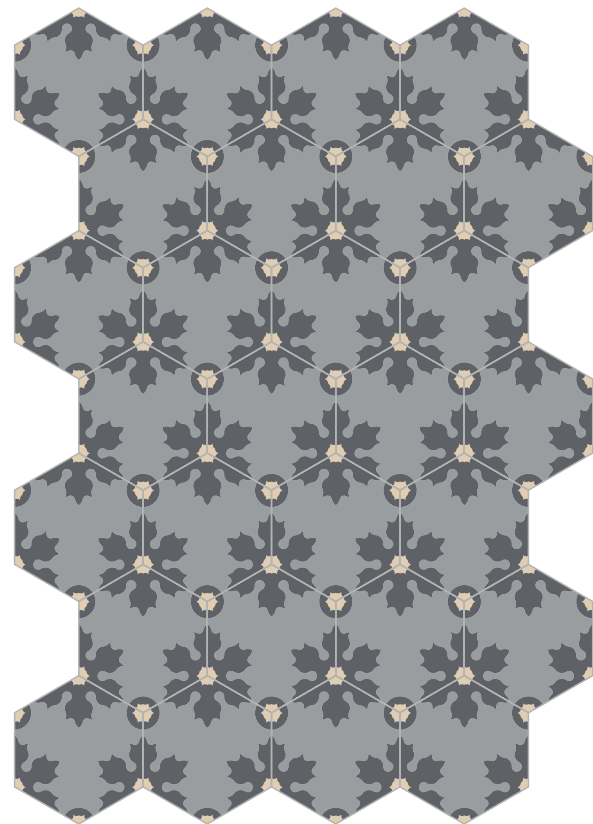
OAK ICEBERG

Argento, Latte, Cilestrino



FREEZE SIENA

Ruggine, Tan, Porfido

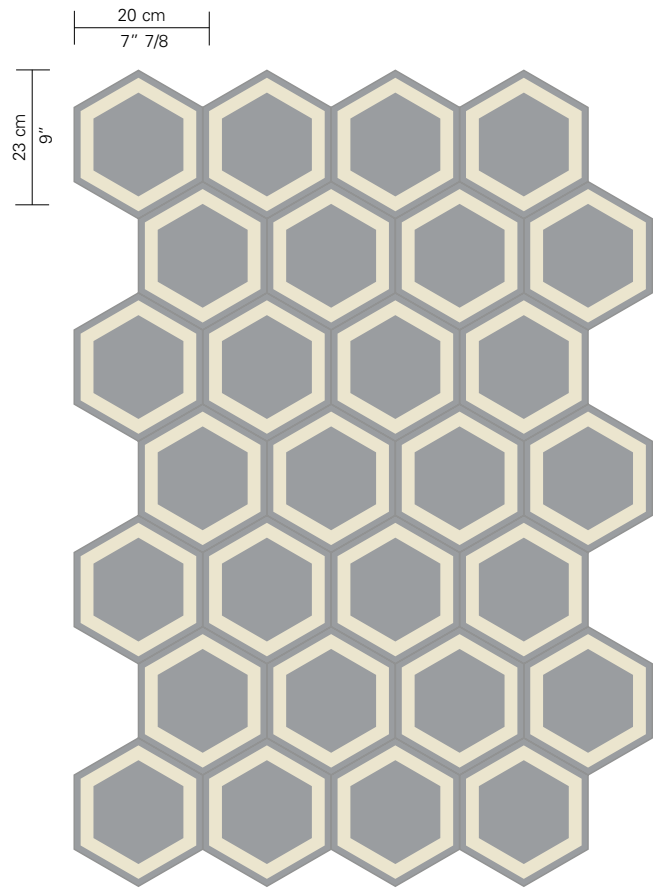


FREEZE TITANIO

Macadam, Tan, Asfalto

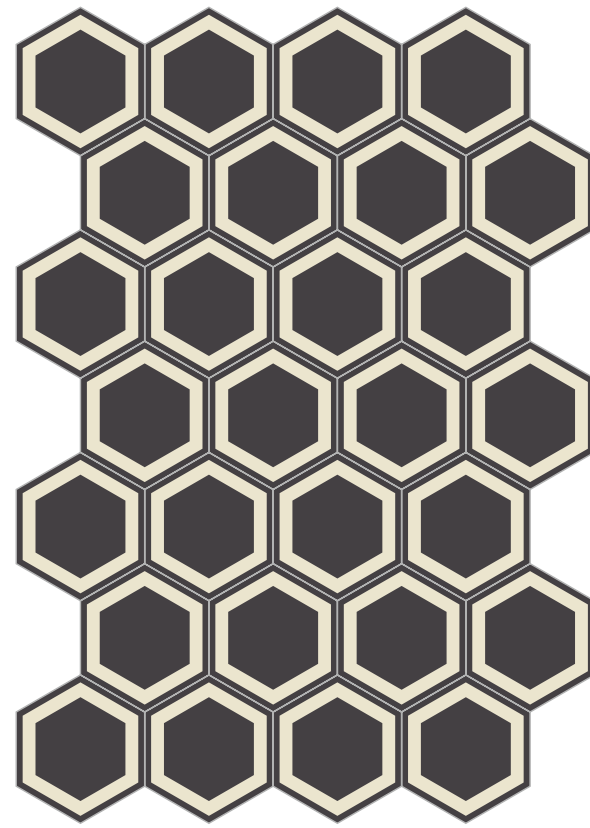


FREEZE SIENA



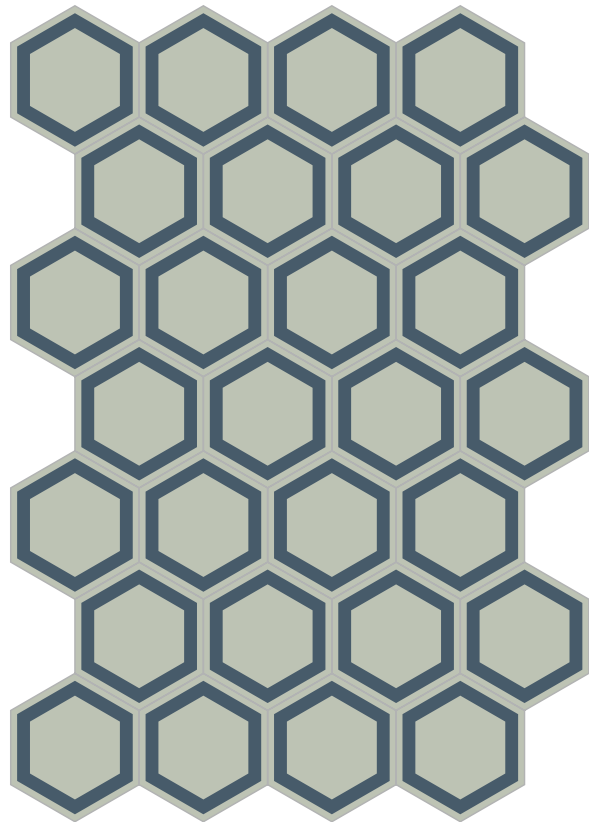
**HONEY BETON**

Macadam, Latte



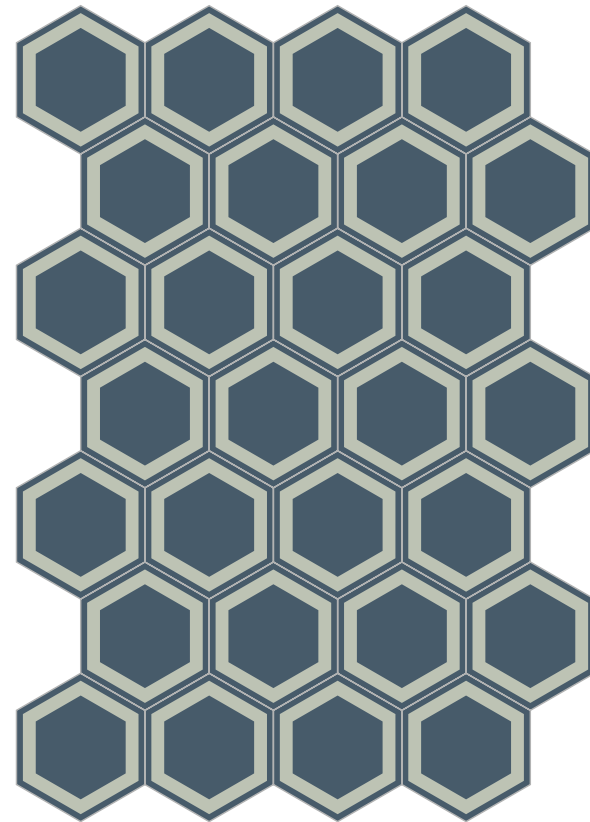
**HONEY NERO**

Liquirizia, Latte



**HONEY BISMARCK**

Argento, Prussia



**HONEY AVIO**

Prussia, Argento



**HONEY BETON**

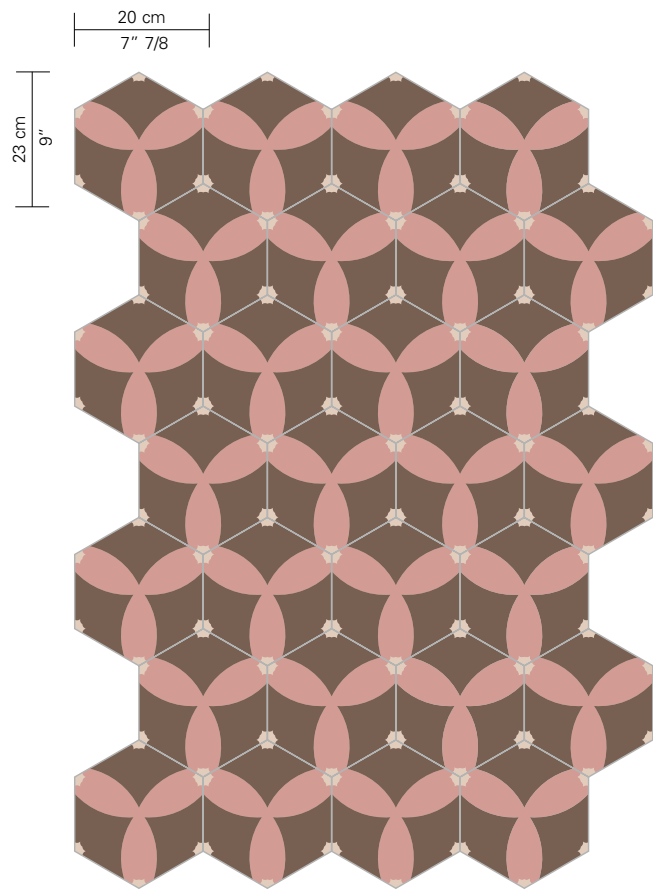




HONEY AVIO

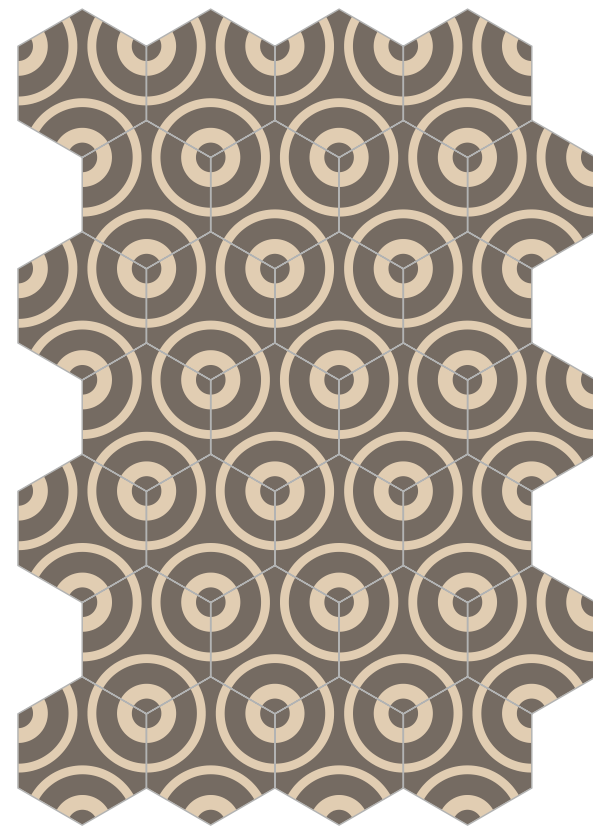


HONEY BISMARCK



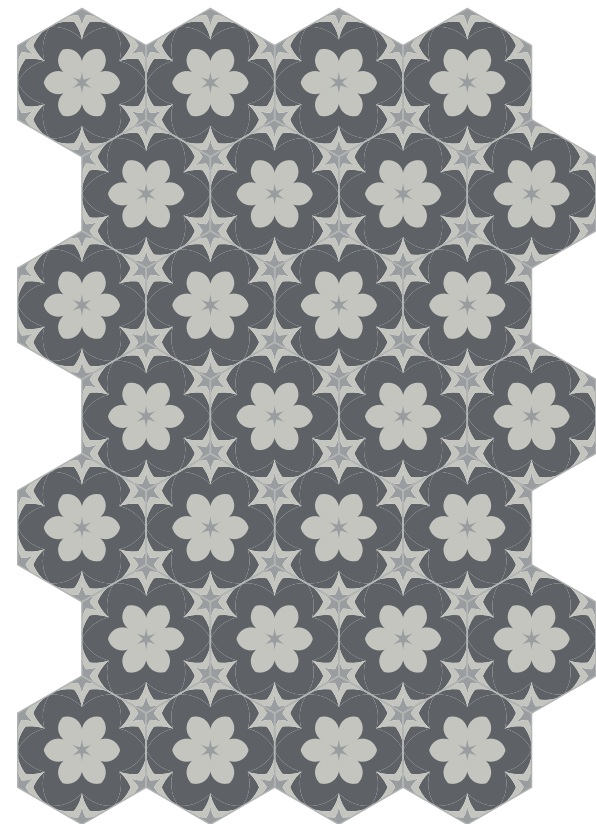
**ASTRAL BAKERY**

Tabacco, Loto, Fresia



**CONCENTRIC TORTORA**

Fango, Tan



**ARIEL URBAN**

Asfalto, Nebbia, Macadam



**ASTRAL BAKERY**



CONCENTRIC TORTORA

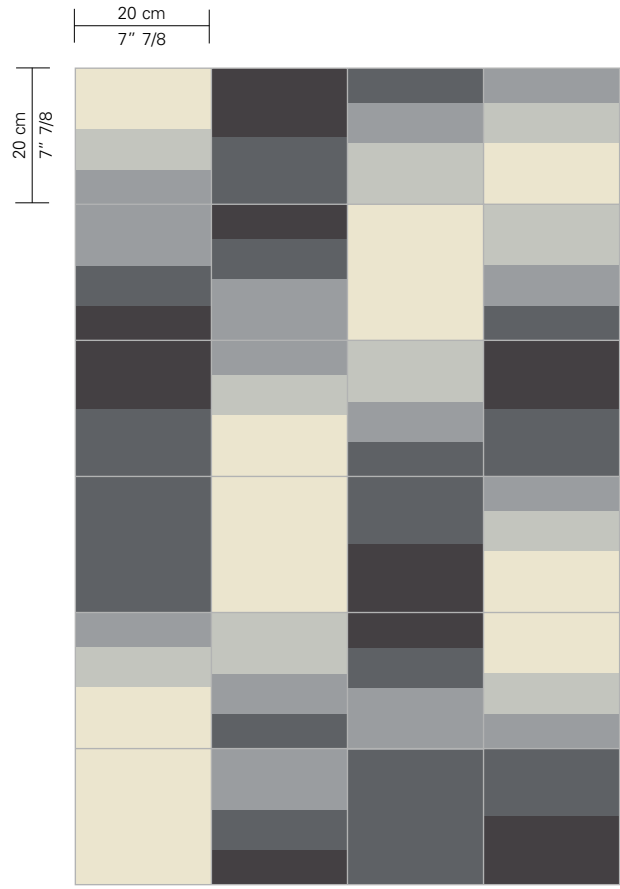


ARIEL URBAN



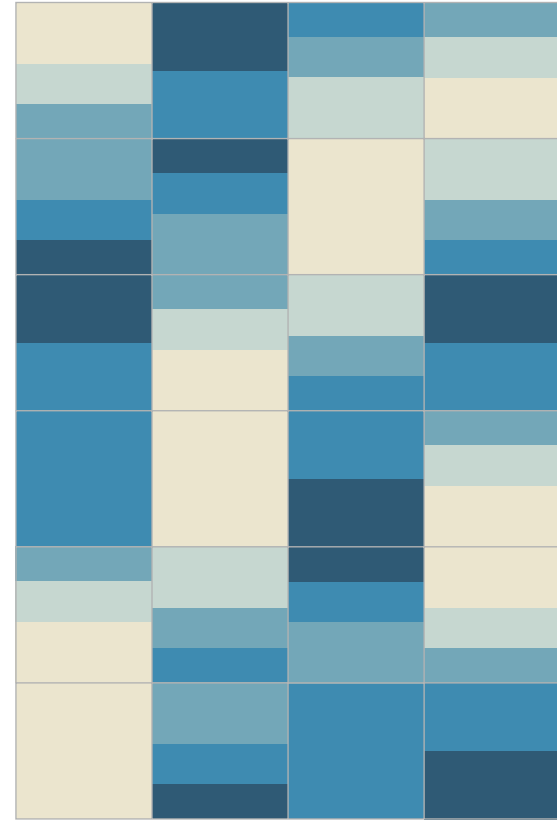
Collezione  
**ROCKWELL**

design David Rockwell



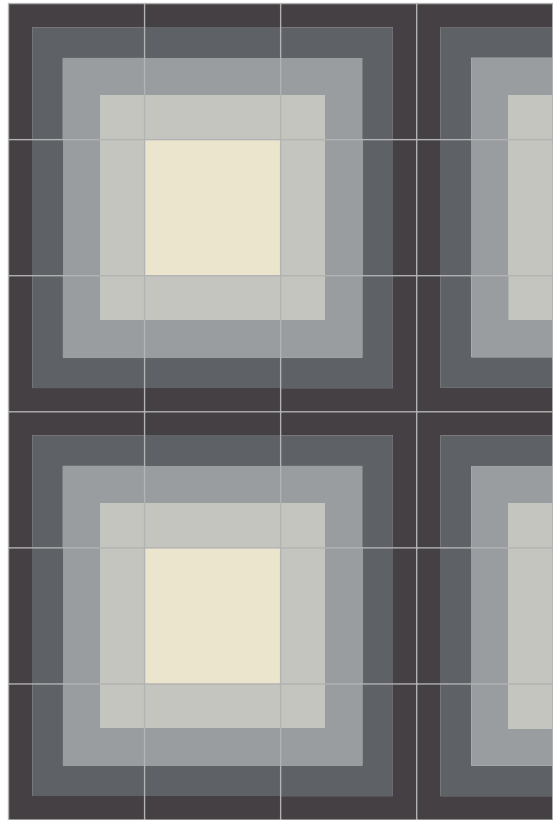
Liquirizia, Asfalto, Macadam, Nebbia, Latte

SWING CHARCOAL



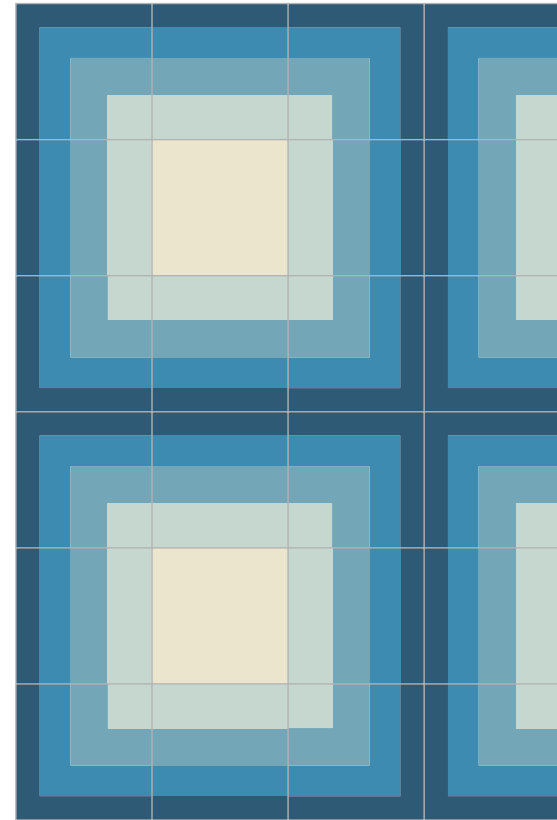
Mare, Atlantico, Turchino, Cilestrino, Latte

SWING INDIGO



Liquirizia, Asfalto, Macadam, Nebbia, Latte

MAZE CHARCOAL



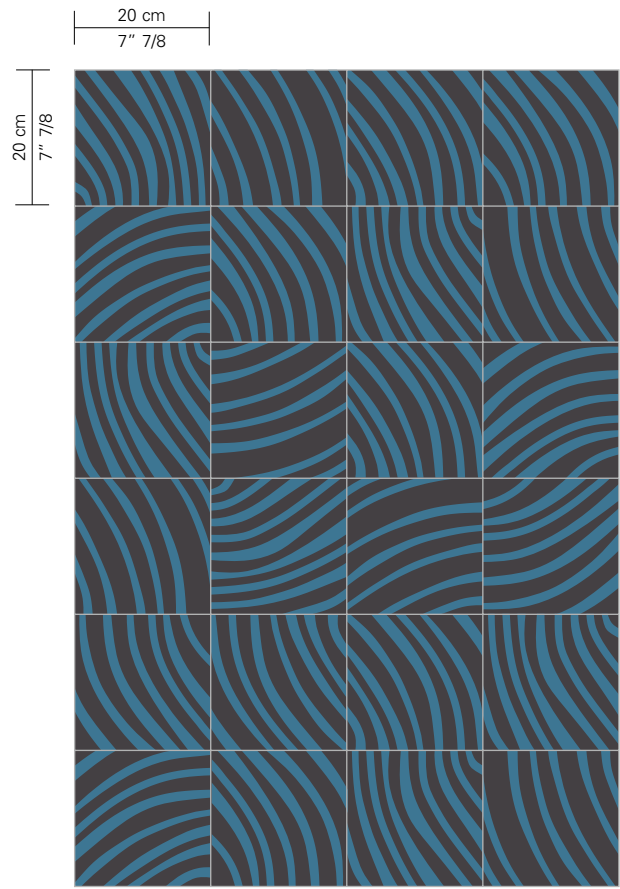
Mare, Atlantico, Turchino, Cilestrino, Latte

MAZE INDIGO



SWING CHARCOAL





Atlantico, Liquirizia

END GRAIN OCEAN



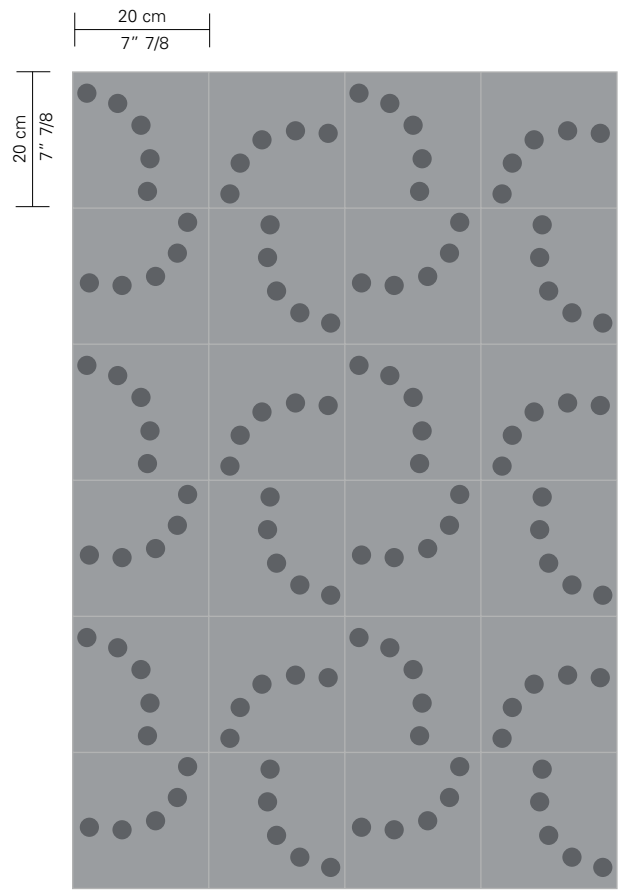
END GRAIN OCEAN



Collezione  
**HAYON**

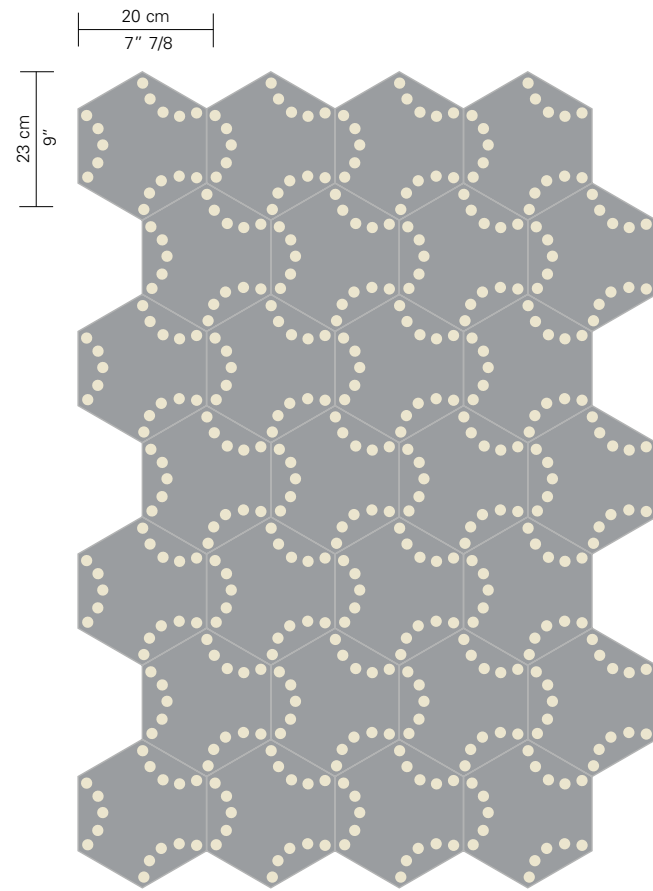
design Jaime Hayon





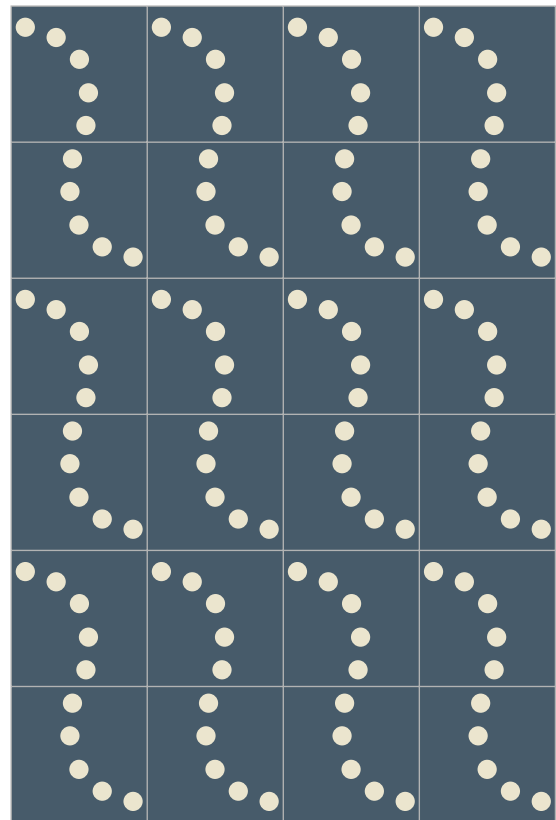
Macadam, Asfalto

**PERLAS HUMO D**



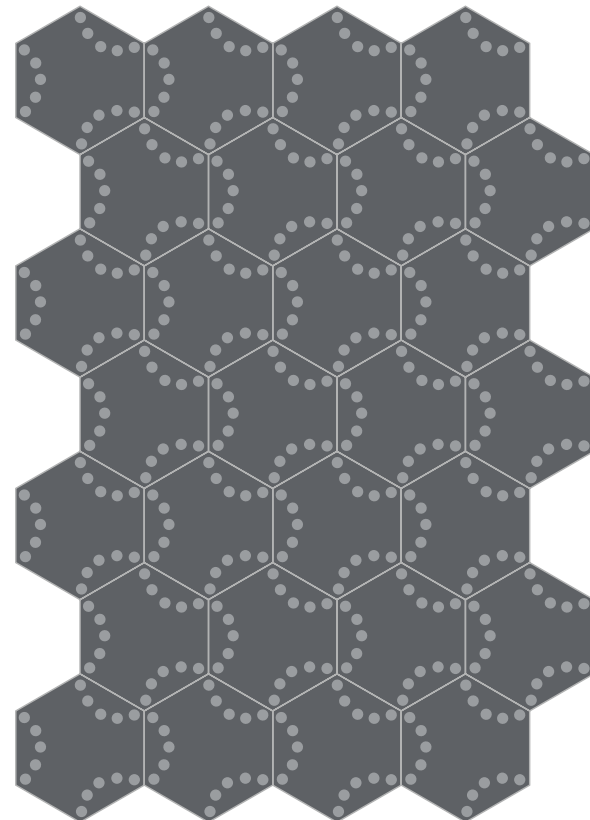
Macadam, Latte

**LUNAS BILBAO A**



Prussia, Latte

**PERLAS MAR A**



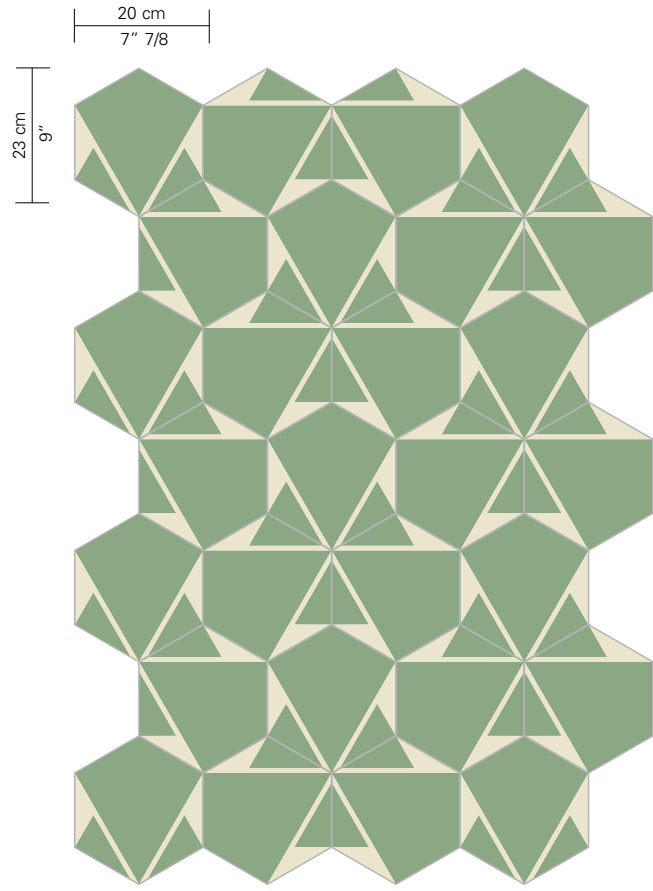
Asfalto, Macadam

**LUNAS SOMBRA A**



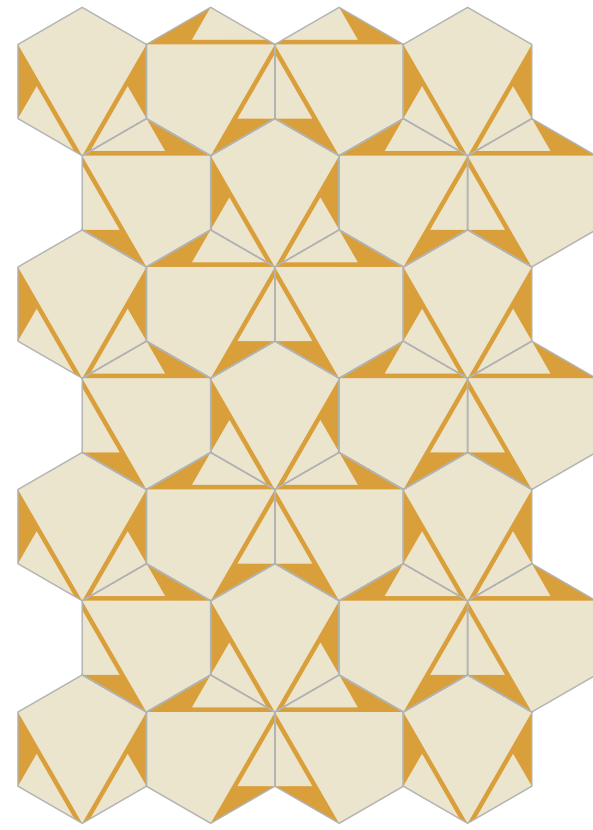
**PERLAS MAR A**





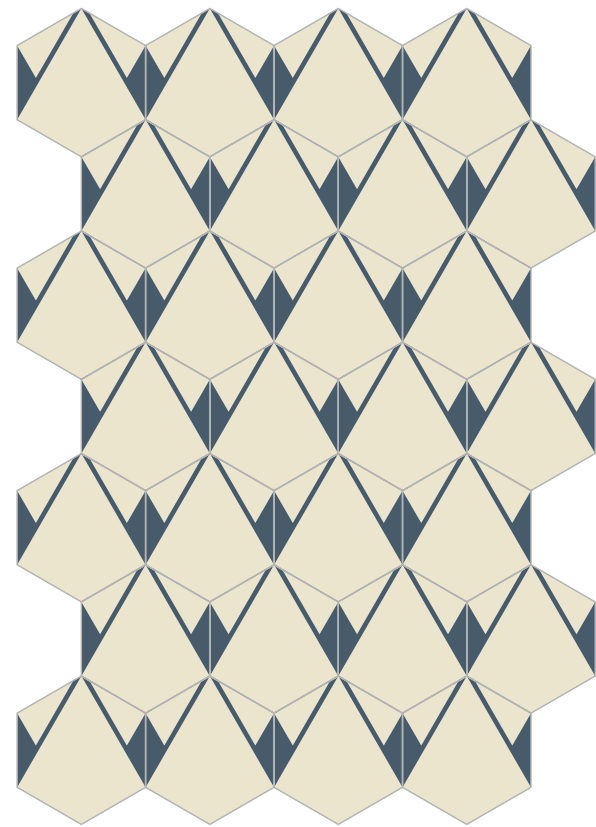
**PLISADOS JADE C**

Lichene, Latte



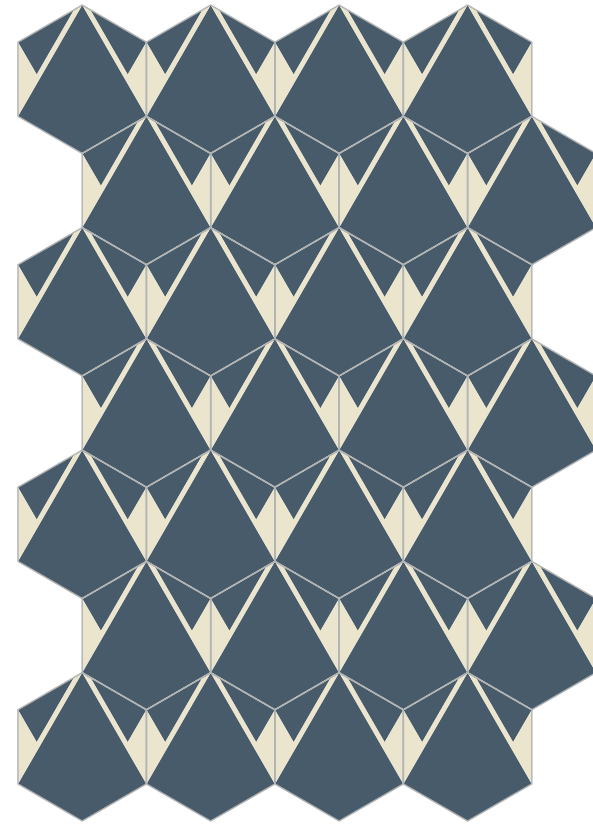
**PLISADOS AMBAR C**

Latte, Zafferano



**PLISADOS TOPACIO A**

Latte, Prussia



**PLISADOS MAR A**

Prussia, Latte



**PLISADOS JADE C**



Collezione  
**BDS**





**CLOCKWORK RHINO**



**CLOCKWORK RAIN**



**FLAKES MARQUINIA**



**PAPER BLU**





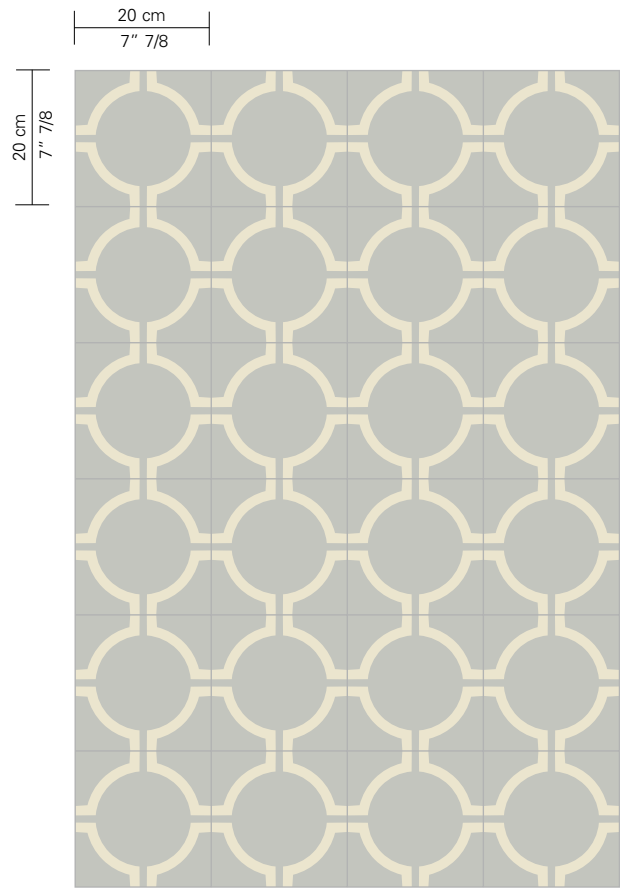
FLAKES MARQUINIA



*Cuisine*

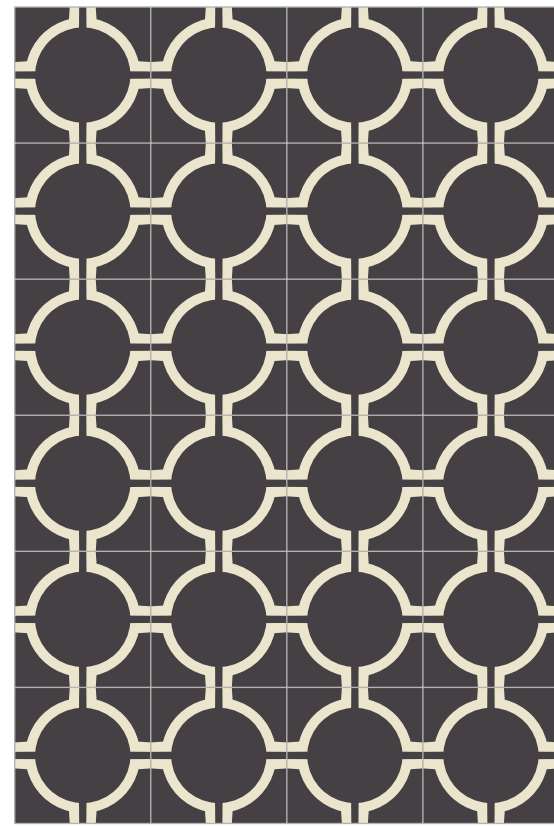
PAPER BLU





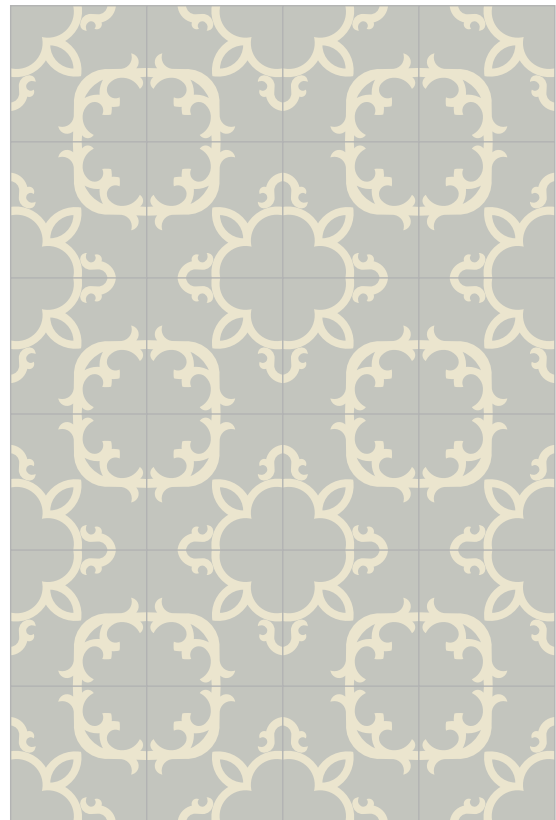
Nebbia, Latte

CIRCUS FROST



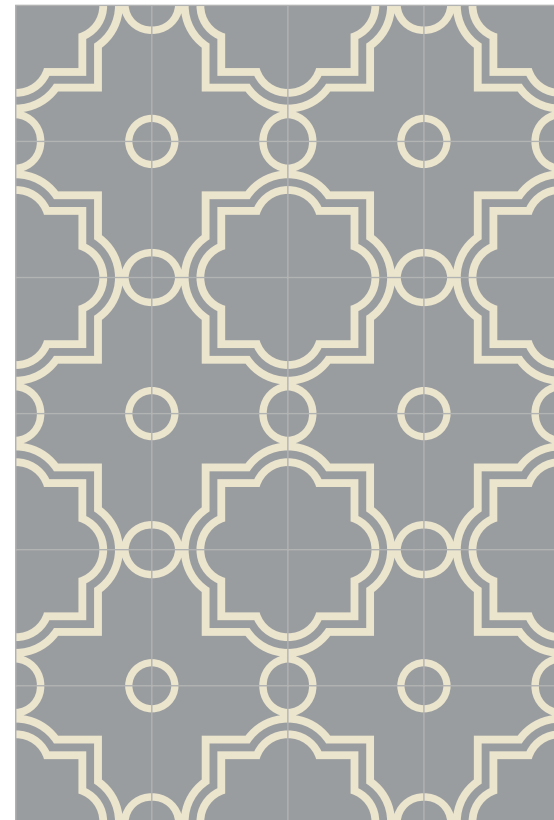
Liquirizia, Latte

CIRCUS NERO



Nebbia, Latte

LACE FROST



Macadam, Latte

TEMPLE BETON

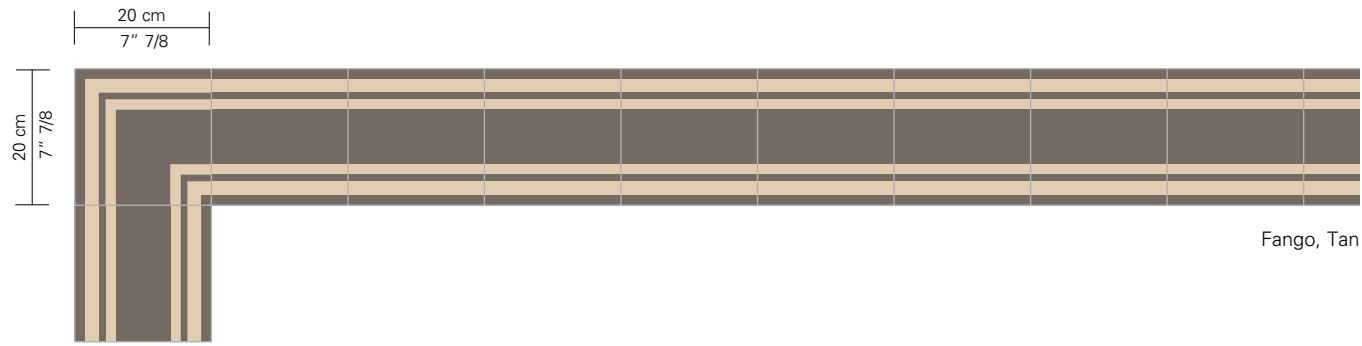


CIRCUS NERO



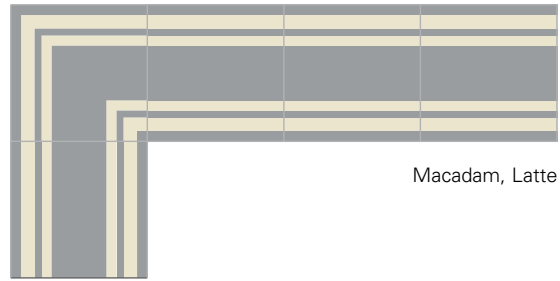
TEMPLE BETON - INSIDE CARNICO - MACADAM (O)

BORDERS  
&  
BLENDS



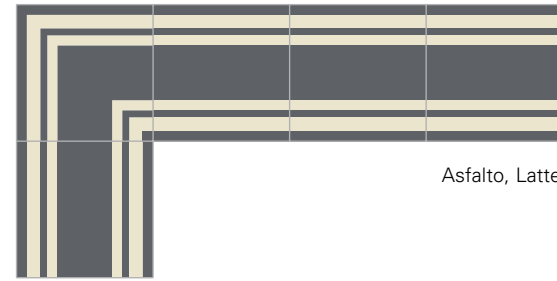
Fango, Tan

**INSIDE TORTORA (A + B)**



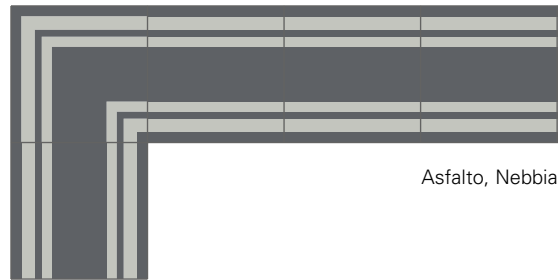
Macadam, Latte

**INSIDE BETON (A + B)**



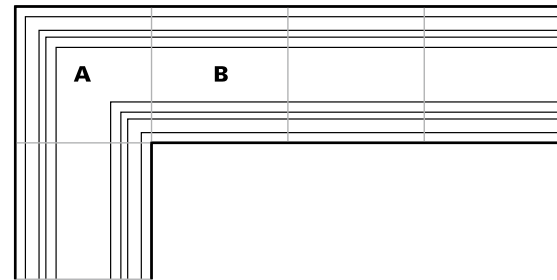
Asfalto, Latte

**INSIDE CARNICO (A + B)**



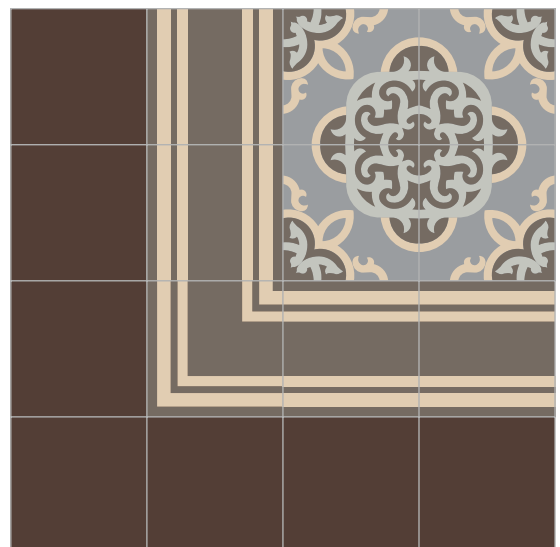
Asfalto, Nebbia

**INSIDE FERRO (A + B)**



**INSIDE (A + B)**

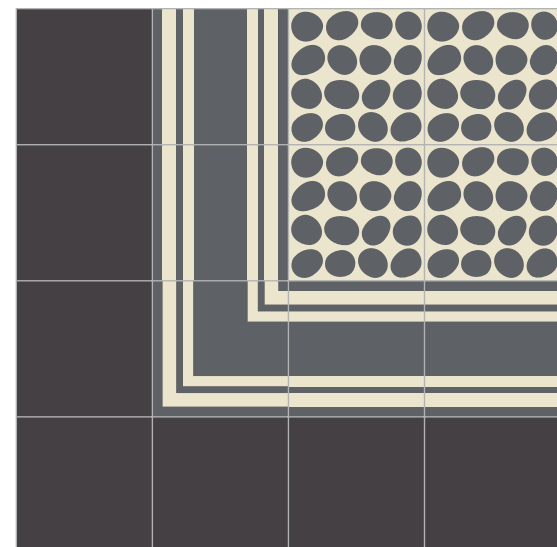
BORDERS



Clockwork Rhino

Inside Tortora

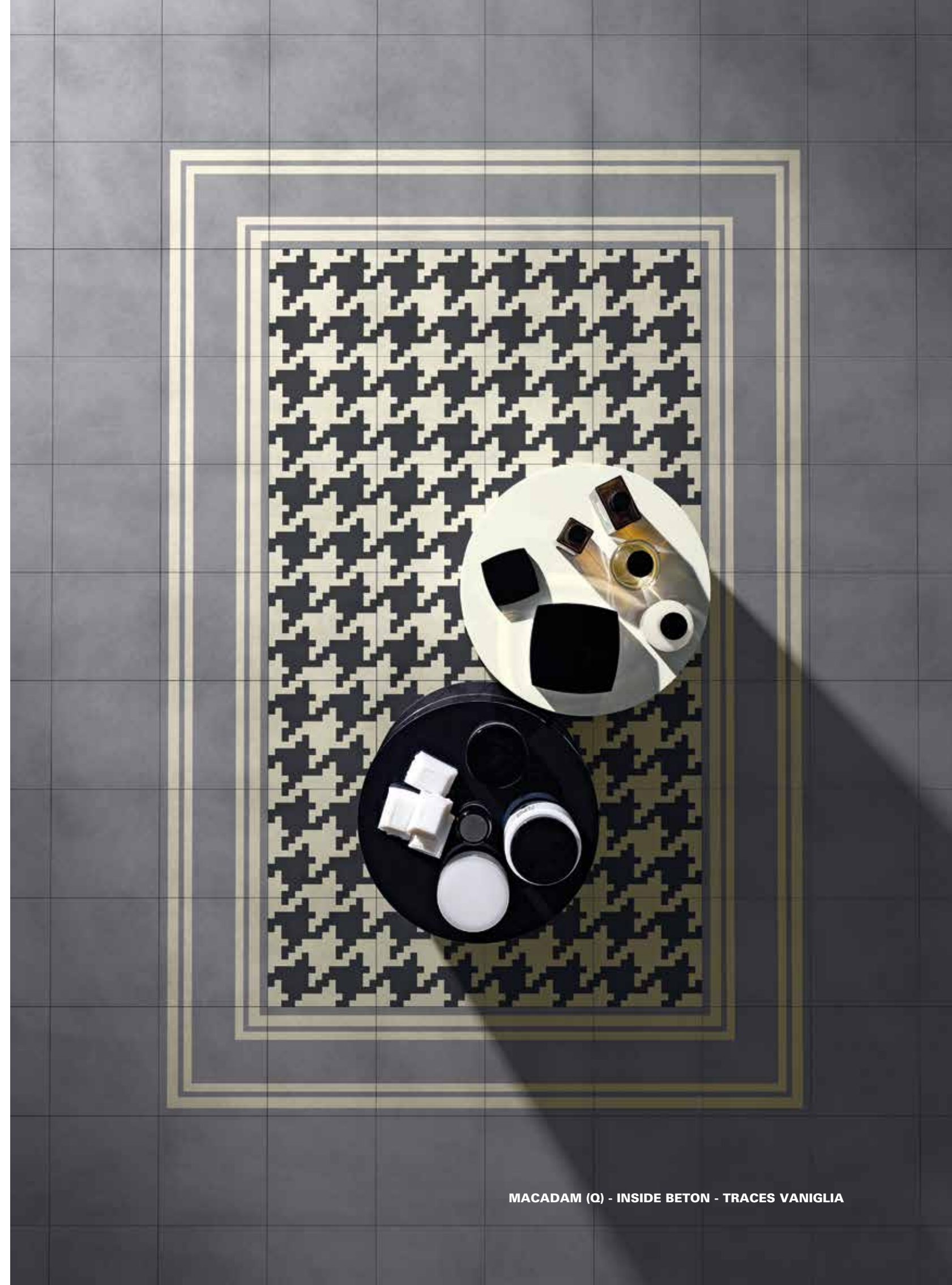
Cioccolato (Q)



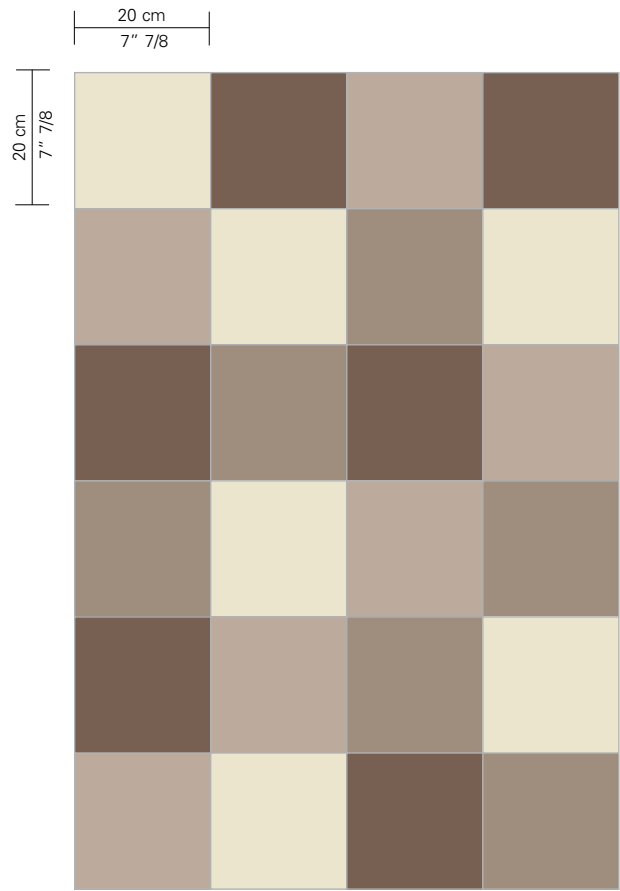
Pieno White

Inside Carnico

Liquirizia (Q)

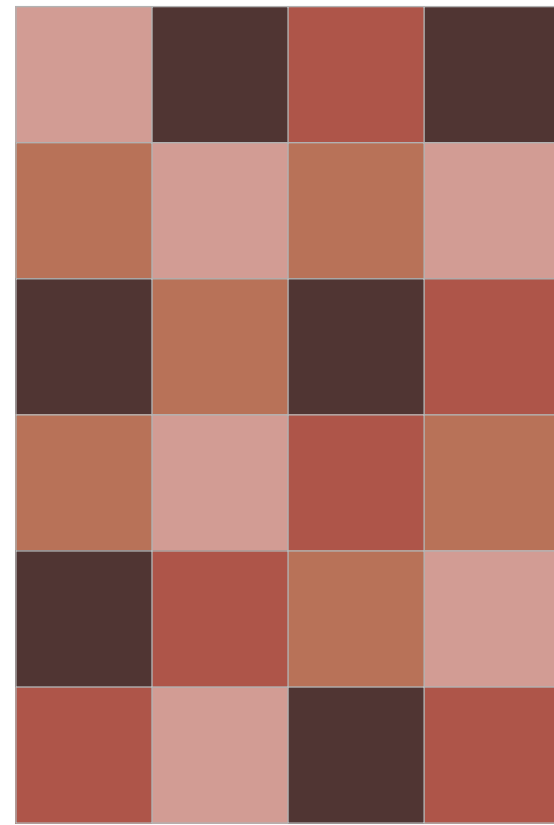


MACADAM (Q) - INSIDE BETON - TRACES VANIGLIA



Latte, Corda, Écru, Tabacco

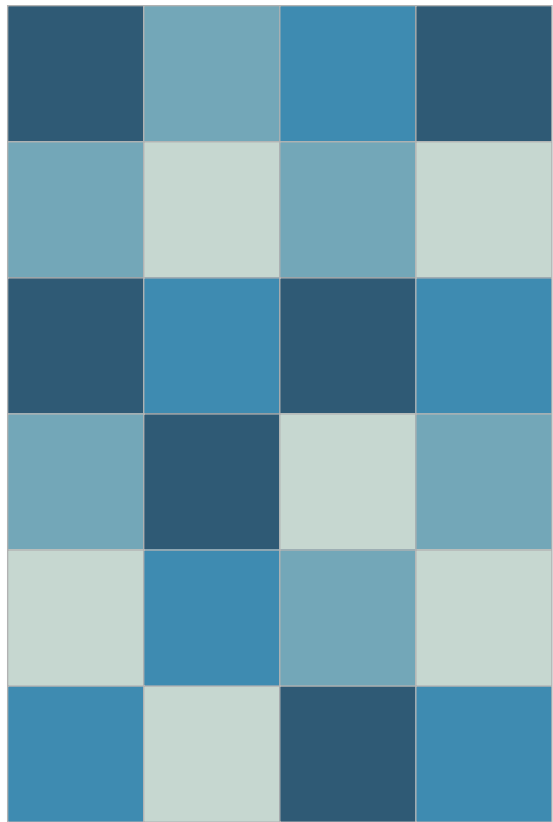
**AUTUNNO (Q)**



Fresia, Ruggine, Diaspro, Porfido

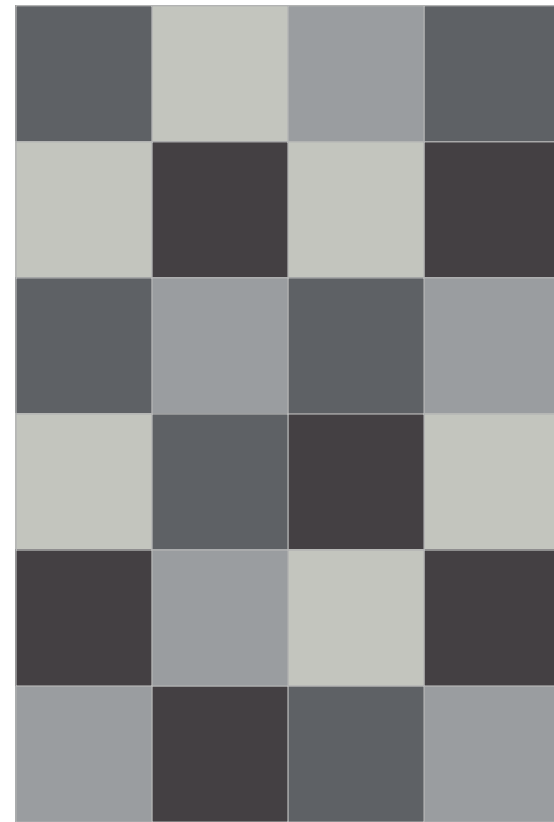
**ESTATE (Q)**

**BLENDS**



Cilestrino, Turchino, Atlantico, Mare

**PRIMAVERA (Q)**



Nebbia, Macadam, Asfalto, Liquirizia

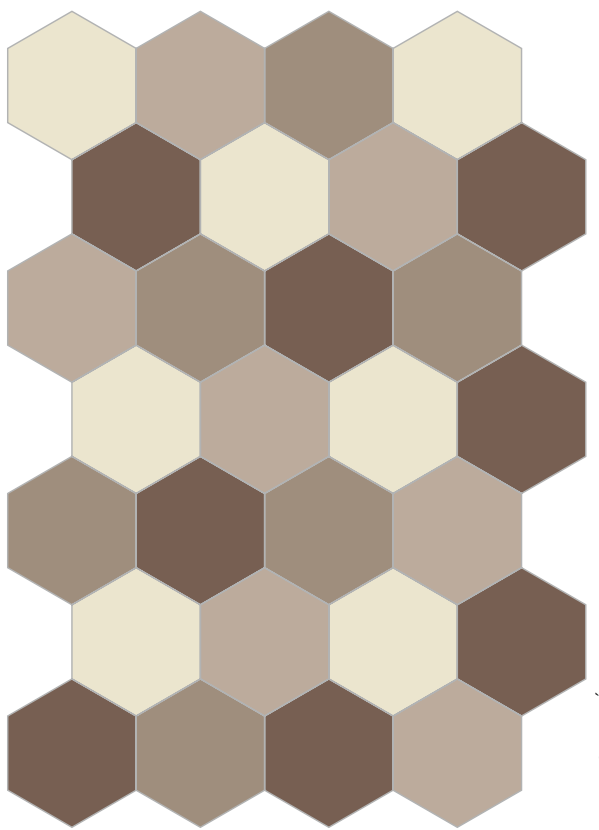
**INVERNO (Q)**



**INVERNO (Q)**

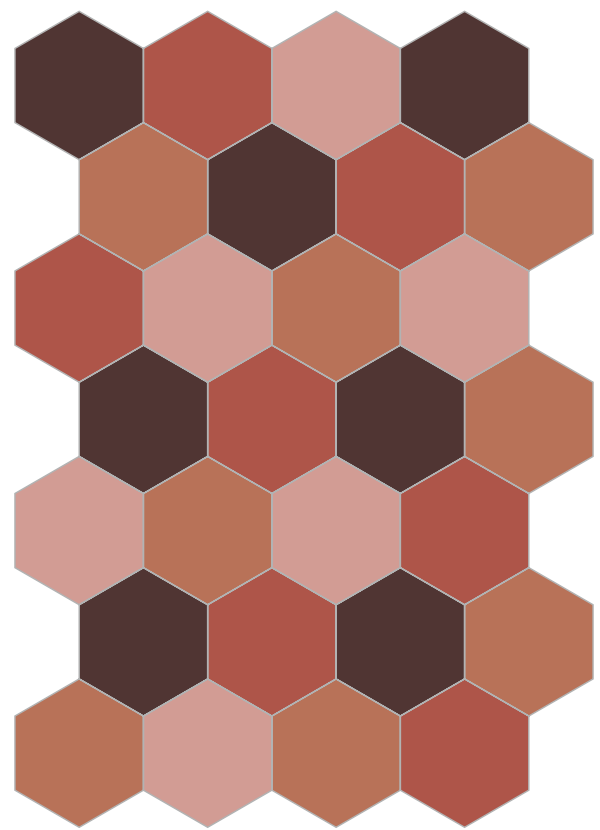
20 cm  
7" 7/8

23 cm  
9"



Latte, Corda, Écru, Tabacco

**AUTUNNO (E)**



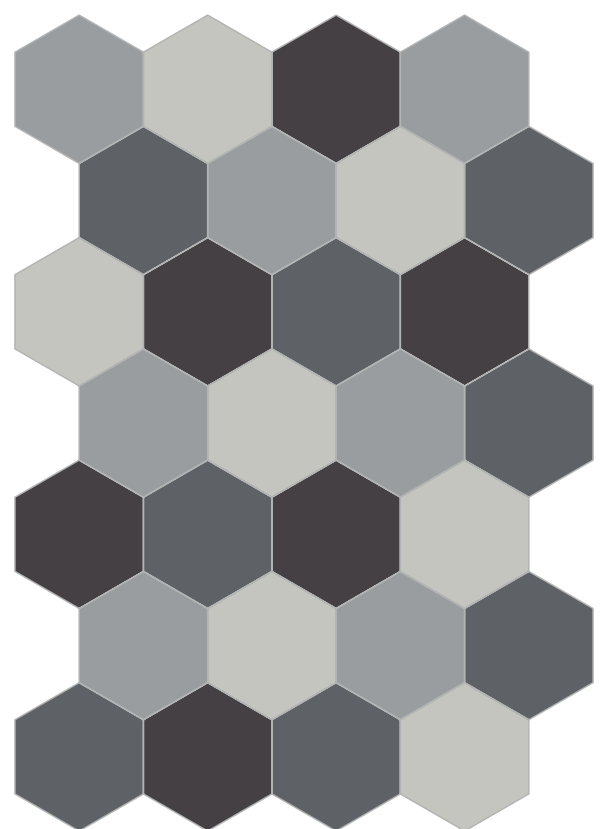
Fresia, Ruggine, Diaspro, Porfido

**ESTATE (E)**



Cieistrino, Turchino, Atlantico, Mare

**PRIMAVERA (E)**



Nebbia, Macadam, Asfalto, Liquirizia

**INVERNO (E)**

**BLENDS**



**ESTATE (E)**

20 cm  
7" 7/8

23 cm  
9"

BLENDS



PRIMAVERA (E)



AUTUNNO (O)

AREA TECNICA  
*TECHNICAL DATA*



**Indicazioni d'uso:** la collezione *Bisazza Cementiles* è destinata ad uso interno.

**Collanti e stucchi:** utilizzare collanti cementizi a presa rapida o semi-rapida, come Bisazza Ad Hoc, e stucchi cementizi di colore neutro (grigi chiari).

**Trattamento:** le piastrelle vengono fornite già trattate con un impregnante. A posa ultimata, la superficie necessita di due mani di cera di finitura, prima della stuccatura finale.

**Pulizia ordinaria:** utilizzare detergenti neutri, e non detersivi aggressivi, acidi o alcalini, o candeggina.

**Manutenzione periodica:** la finitura a cera della superficie va rinnovata periodicamente, seguendo le istruzioni indicate dal produttore della cera stessa.

**Caratteristiche del prodotto:** le variazioni dimensionali e cromatiche rientrano nelle tolleranze di un processo produttivo che prevede diverse lavorazioni manuali, e sono da considerarsi, per questo, caratteristiche distintive del prodotto stesso.

**Avvertenze generali:** l'esposizione continua ai raggi UV può far variare nel tempo il tono di colore delle piastrelle.  
Il pavimento in piastrelle di cemento Bisazza non va levigato.

**Directions for use:** *Bisazza Cementiles* are intended for internal use.

**Adhesives and grouts:** use semirapid or rapid cement-based adhesives, such as Bisazza Ad Hoc, and neutral-coloured (light grey) cement-based grouts.

**Treatment:** when supplied the tiles are already pre-treated with a sealant. After the installation, the surface requires two coats of finishing wax, before the final grouting.

**Routine cleaning:** use neutral detergents. Do not bleach and never use aggressive, acid or alkaline cleaning agents.

**Regular maintenance:** the surface should be waxed regularly, following the recommendations of the wax manufacturer.

**Product features:** dimensional and chromatic variation is intrinsic of this production process involving several manual steps and it is a distinctive feature of the product.

**General warnings:** tile colours may fade after prolonged exposure to sunlight. Do not sand or grind Bisazza cement tile flooring.

**Indications d'utilisation :** les *Bisazza Cementiles* sont destinés aux espaces intérieurs.

**Mortiers colles et joints :** utiliser des colles ciment à prise rapide ou semi-rapide, comme Bisazza Ad Hoc, et des joints ciment de couleur neutre (gris clair).

**Traitement :** un prétraitement de protection est réalisé sur nos carreaux. Cependant, une fois la pose achevée, et avant de jointoyer, il faut appliquer deux couches de cire de finition.

**Nettoyage ordinaire :** utiliser des détergents neutres et des produits non agressifs, ni acides, ni alcalins ; ne jamais utiliser d'eau de Javel.

**Entretien périodique :** la finition à la cire de la surface doit être renouvelée périodiquement, en suivant les instructions fournies par le producteur de la cire.

**Caractéristiques du produit :** les variations des dimensions et des couleurs, inhérentes à un processus de production qui prévoit différentes opérations manuelles, sont à considérer comme étant des caractéristiques distinctives du produit.

**Avertissements généraux :** avec le temps, l'exposition continue aux rayons ultraviolets peut modifier la tonalité de la couleur des carreaux.  
Le sol en carrelage de ciment Bisazza ne doit pas être poli.

**Verwendung:** *Bisazza Cementiles* sind nur für den Innenbereich gedacht.

**Kleber und Fugenmassen:** Zementhaltige, schnell trocknende Kleber oder Semi-schnell trocknende Kleber wie Bisazza Ad Hoc und zementhaltige Fugenmasse mit neutraler Färbung (hellgrau).

**Behandlung:** die Fliesen sind bei der Lieferung mit einer Imprägnierung vorbehandelt. Nach der Verlegung und vor der Verfugung müssen dennoch zwei abschließende Schichten Wachs aufgetragen werden.

**Regelmäßige Reinigung:** nur neutrale Reinigungsmittel. Keine aggressiven, säurehaltigen, alkalischen Produkte sowie keine Bleichmittel verwenden.

**Regelmäßige Pflege:** die Wachsschicht auf der Oberfläche muss regelmäßig erneuert werden. Folgen Sie hierzu bitte den Hinweisen des Wachsherstellers.

**Produkteigenschaften:** die Maß- und Farbabweichungen liegen innerhalb der Toleranzen des Produktionsprozesses, der mehrere Phasen der Handbearbeitung einschließt, und stellen daher keine Mängel, sondern charakteristische Eigenschaften des Produkts dar.

**Allgemeine Hinweise:** Die ständige Einwirkung von UV-Strahlung kann im Verlauf der Zeit den Farbton der Fliesen verändern.  
Bodenbeläge aus Zementfliesen dürfen nicht abgeschliffen werden.

**Indicaciones de uso:** la colección *Bisazza Cementiles* está destinada al uso en interiores.

**Cola y pasta de rejuntar:** utilizar cemento cola de fraguado rápido o semirápido, como Bisazza Ad Hoc, y pastas de rejuntar a base cemento de color neutro (grises claros).

**Tratamiento:** las baldosas se suministran ya tratadas con un protector. Al terminar la colocación, y antes de rejuntar, es imprescindible aplicar dos capas de cera de acabado.

**Limpieza ordinaria:** para el mantenimiento ordinario utilizar detergentes neutros, evitar detergentes agresivos, ácidos o alcalinos, y lejía.



**Mantenimiento periódico:** el acabado con cera de la superficie se tiene que renovar periódicamente, siguiendo las instrucciones del productor de la cera.

**Características del producto:** las variaciones de medida y de color caben en las tolerancias de un proceso productivo que prevé varias elaboraciones manuales y, por lo tanto, deben considerarse como características distintivas del producto.

**Advertencias generales:** la exposición continua a los rayos UV con el tiempo puede modificar el color original del producto.  
El pavimento de baldosas de cemento no se debe pulir nunca.

## MISURE E PESI

weight and dimensions  
poids et dimensions  
Größe und Gewichte  
medidas y pesos

	 QUADRATO SQUARE	 ESAGONO HEXAGON
<b>Dimensione</b> Size Format Format Tamaño	200x200 mm	200x230 mm
<b>Spessore</b> Thickness Épaisseur Stärke Espesor	14 mm	14 mm
<b>Giunto</b> Joint Fugenbreite Junta	2 mm	2 mm
<b>Peso</b> Weight Poids Gewicht Peso	33,2 kg/mq	33,2 kg/mq
<b>Pezzi per scatola</b> Pieces per carton Pièces par carton Stück pro Karton Unidades por caja	12	12
<b>Quantità per scatola</b> Quantity per carton Quantité par carton Quantität pro Karton Cantidad por caja	0,48 mq	0,42 mq
<b>Peso per scatola</b> Weight per carton Poids par carton Gewicht pro Karton Peso por caja	15,6 kg	14,4 kg

## ISTRUZIONI DI POSA E MANUTENZIONE

laying and maintenance instructions  
instructions de pose et d'entretien  
Verlege- und Pflegehinweise  
instrucciones de colocación y de mantenimiento

Per ulteriori informazioni, consultare la scheda prodotto e le istruzioni di posa e manutenzione nell'area tecnica del sito [www.bisazza.com](http://www.bisazza.com).

For more information, refer to the product data sheet and laying and maintenance instructions in the Technical Area of the site [www.bisazza.com](http://www.bisazza.com).

Pour tout complément d'information, veuillez consulter la fiche du produit, aussi bien que les instructions pour la pose et l'entretien correspondantes, dans la section technique de notre site [www.bisazza.com](http://www.bisazza.com).

Für weitere Informationen besuchen Sie bitte unsere Homepage, da finden Sie unter dem Kapitel Technische Hinweise, Wood, das Produktdatenblatt, die Pflegehinweise und die Verlegeanweisungen.

Para más información, consulte la ficha de producto y las instrucciones para la colocación y de mantenimiento en el apartado técnico de nuestra página web [www.bisazza.com](http://www.bisazza.com).



## CARATTERISTICHE TECNICHE

technical features  
caractéristiques techniques  
Technische Eigenschaften  
características técnicas

TEST	VALORI LIMITE PREVISTI ESTABLISHED LIMITS VALEURS LIMITES PRÉVUES VORGESEHENE GRENZWERTE VALORES LIMITE PREVISTOS	CEMENTILES
<b>Lunghezza e larghezza</b> Length and width Longueur et largeur Länge und Breite Longitud y anchura	EN 13748-1:2005 TM 5.2	+/- 0,3% max Conforme alla norma Complies with the standards Conforme aux normes Anforderungen erfüllt Conforme con las normas
<b>Spessore</b> Thickness Épaisseur Stärke Espesor	EN 13748-1:2005 TM 5.2	+/- 2 mm max Conforme alla norma, Th I Complies with the standards, Th I Conforme aux normes, Th I Anforderungen erfüllt, Th I Conforme con las normas, Th I
<b>Rettilineità degli spigoli</b> Straightness of sides Rectitude des arêtes Geradlinigkeit der Kanten Rectitud de los cantos	EN 13748-1:2005 TM 5.3	+/- 0,3% max Conforme alla norma Complies with the standards Conforme aux normes Anforderungen erfüllt Conforme con las normas
<b>Planarità</b> Flatness Planéité Ebenflächigkeit Planeidad	EN 13748-1:2005 TM 5.4	+/- 0,3% max Conforme alla norma Complies with the standards Conforme aux normes Anforderungen erfüllt Conforme con las normas
<b>Assorbimento d'acqua</b> Water absorption Absorption d'eau Wasseraufnahme Absorción de agua	EN 13748-1:2005 TM 5.8	Max 8% 7,2%
<b>Carico di rottura</b> Breaking load Charge de rupture Bruchfestigkeit Carga de rotura	EN 13748-1:2005 TM 5.5	Ff <2,5 kN Class 1
<b>Resistenza allo scivolamento</b> Antislip value Résistance au glissement Rutschhemmung Resistencia al deslizamiento	EN 13748-1:2005 TM 5.7	USRV 23*
<b>Reazione al fuoco</b> Fire reaction Réaction au feu Feuerreaktion Reacción al fuego	96/603/CEE	A1-fi
<b>Resistenza all'abrasione profonda</b> Deep wear resistance Résistance à l'abrasion profonde Tiefenabriebfestigkeit Resistencia a la abrasión profunda	EN 13748-1:2005 TM 5.6.1	<25 mm 23,2 mm
<b>Resistenza alle macchie**</b> Stains Resistance** Résistance aux taches** Fleckenbeständigkeit** Resistencia a las manchas**	EN 14617-10:2005 Appendix A (CTI-81-7 App. D)	Macchia rimossa con detergente entro 1 ora Within 1 hour, stain removed with a detergent Tache laissée 1h. s'élimine avec un détergent Innerhalb einer Stunde Fleck mit einem Reiniger entfernt Mancha quitada con detergente dentro de una hora
Standard Test Method for Breaking Strength of Ceramic Tile	ASTM C648-04	400 lbs

\*USRV: Unpolished Slip resistance Value.

Interni aree pubbliche con percentuale < 6% / Indoor public areas with percentage < 6% / Intérieurs des zones publiques avec un taux < 6% / Öffentliche Räume mit einem Prozentsatz von < 6% / Interior de zonas públicas con porcentaje < 6%

\*\*Senape, grasso animale, olio di arachide / Mustard, animal fat, peanut oil / Moutarde, graisse animale, huile d'arachide / Senf, tierisches Fett, Erdnussöl / Mostaza, grasa animal, aceite de cacahuete



## INDICE ALFABETICO

contents  
index alphabétique  
Alphabetisches Inhaltsverzeichnis  
índice alfabético

	PAG		
<b>A</b>			
ARIEL URBAN	112	I	
ASTERISQUE B&W	28	IN THE SKY 10	56
ASTERISQUE LEGER	28	INSIDE BETON	148
ASTRAL BAKERY	112	INSIDE CARNICO	148
AUTUNNO (E)	152	INSIDE FERRO	148
AUTUNNO (Q)	150	INSIDE TORTORA	148
		INVERNO (E)	152
		INVERNO (Q)	150
<b>B</b>			
BANDES VINTAGE	32	<b>K</b>	
BRAZILIAN AGATA BLU	70	KARL FROST	76
BRAZILIAN AGATA VERDE	70	KARL TORTORA	76
BUTTERFLY 2	46	<b>L</b>	
BUTTERFLY 8	46	LACE FROST	142
		LENS NERO	76
		LUCY 14	56
		LUNAS BILBAO A	126
		LUNAS SOMBRA A	126
		<b>M</b>	
		MAZE CHARCOAL	118
		MAZE INDIGO	118
		MOULD CASTAGNO	76
		<b>O</b>	
		OAK ICEBERG	106
		OAK PACIFIC	106
		ON / OFF NIGHT	36
		ON / OFF TEAL	36
		<b>P</b>	
		PAPER BLU	138
		PERLAS HUMO D	126
		PERLAS MAR A	126
		PIENO WHITE	32
		PILL COCKTAIL 21	46
		PILL COCKTAIL 30	46
		PIPE CORNER GREY	60
		PIPE CURVE GREY	60
		PIPE STRAIGHT GREY	60
		PLISADOS AMBAR C	130
		PLISADOS JADE C	130
		PLISADOS MAR A	130
		PLISADOS TOPACIO A	130
		PRIMAVERA (E)	152
		PRIMAVERA (Q)	150
		<b>R</b>	
		RAIN 10	56
		<b>S</b>	
		SPELL MARINO	94
		SWING CHARCOAL	118
		SWING INDIGO	118
		<b>T</b>	
		TAC NIGHT	36
		TAPIS MARINO	90
		TAPIS ONICE	90
		TEMPLE BETON	142
		TRACES VANIGLIA	94
		TWIGGY BETON	86
		TWIGGY NERO	86
		<b>Z</b>	
		ZAG FROST	86
		ZAG VANIGLIA	86
<b>C</b>			
CARREAU B&W	28		
CARREAU LEGER	28		
CIRCUS FROST	142		
CIRCUS NERO	142		
CLOCKWORK RAIN	138		
CLOCKWORK RHINO	138		
CONCENTRIC TORTORA	112		
CUBIC ICEBERG	102		
CUBIC PACIFIC	102		
CUBIC PLATINO	102		
CUBIC SUN	102		
CUPCAKE SHARK	94		
<b>D</b>			
DALIDA MARQUINIA	94		
DOMINO 10	50		
DOMINO 12	50		
DOT 5	50		
DUCT GREY	60		
<b>E</b>			
ECLIPSE 25	50		
EDEN PACIFIC	90		
EDEN WINTER	90		
END GRAIN OCEAN	122		
ESTATE (E)	152		
ESTATE (Q)	150		
<b>F</b>			
FLAKES MARQUINIA	138		
FREEZE SIENA	106		
FREEZE TITANIO	106		
FRINGE BLACK	40		
FRINGE LIGHT	40		
FRINGE WHITE	40		
<b>G</b>			
GRIT BLUE	64		
GRIT DARK GREY	64		
GRIT LIGHT GREY	64		
GUSTAV FROST	82		
GUSTAV GRIGIO	82		
GUSTAV MARQUINIA	82		
<b>H</b>			
HALF POWDER	36		
HONEY AVIO	108		
HONEY BETON	108		
HONEY BISMARCK	108		
HONEY NERO	108		

Foto Marco Bertolini / Living Inside  
Lorenzo Ceretta  
Fabrizio Cicconi / Living Inside  
Enrico Conti  
Greg Cox / Bureaux / Living Inside  
Courtesy of Tom Dixon  
Alberto Ferrero  
Piero Gemelli / Courtesy of Gervasoni  
Courtesy of Giuliano dell'Uva  
Warren Heath / Bureaux  
Matteo Imbriani  
Krista Keltanen  
KlunderBie  
Nathalie Krag / Living Inside  
Fernando Laszlo / Courtesy of Estudio Campana  
Olga Melekestseva / Archpoint Bureau  
Courtesy of Paola Navone  
Giorgio Possenti / Vega MG  
James Reeve / Time Inc.  
Paolo Roversi  
Prue Ruscoe / Taverne  
Lorenzo Vecchia  
Paolo Veclani  
Talisman Photo

Progetto grafico Paolo Rinaldi

**Bisazza**

36075 Montecchio Maggiore  
Vicenza - Italia  
Tel. +39 0444 707511  
[www.bisazza.com](http://www.bisazza.com)